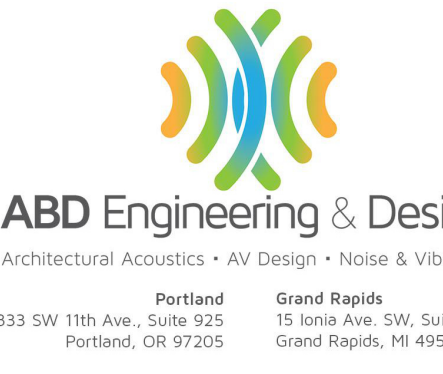




Project Consultant



Revisions
No. Description Date

Stamp

Issuance
FOR BIDDING
Date
06/03/2024

Project Number
22093
EDA Award Number 07-79-07767
URI 116720

Drawing Title
AV COVER SHEET - SYMBOLS, NOTES, & DIVISION OF SCOPE SCHEDULE

Sheet No
AV000

SYMBOL LEGEND

INFRASTRUCTURE SYMBOLS

(ELECTRICAL BOXES, PATHWAY, POWER & DATA REQUIREMENTS - REFER TO NOTES & DIVISION OF SCOPE MATRIX)

WALL BOX

HT → MOUNTING HEIGHT, ON-CENTER
XX-XX → [BOX DESIGNATION, BY APPLICATION] - [NUMBER DESIGNATION]
TYPE → [XIX] = GANG TYPE BOX
[XIX] = NEMA TYPE BOX SIZE (REFER TO ELEC. DEVICE SCHEDULE FOR DEPTH & TYPE INFORMATION)
JB = 4-1/8" SQUARE BOX TYPE (CUSTOM TYPE DESIGNATION) (REFER TO ELEC. DEVICE SCHEDULE FOR SPECIALTY BACKBOX MANUFACTURER, MODEL AND OTHER INFO)

*BOX DESIGNATION REFERS TO APPLICATION OF BOX FOR AV PANELS OR SERVICES, WHICH MAY INCLUDE:
ANT - RF ANTENNA
CAM - CAMERA
CP - CONTROL PANEL (BUTTON OR TOUCH)
IC - INTERCOM PANEL (PRODUCTION OR PAGING)
IP - INPUT PANEL
IR - INFRARED EMITTER PANEL
MIC - MICROPHONE PANEL
PB - PULL BOX (BLANK COVER)
RSP - ROOM SCHEDULING PANEL
SPK - LOUDSPEAKER OR BACKBOX
VI - DISPLAY DEVICE BOX
WAP - WIRELESS ACCESS POINT (AV SPECIFIC)
WB - WALL BOX (SAME AS PB WITH GROMMETTED COVER)
WP - WALL PANEL (INPUT/OUTPUT CONNECTIONS)

DUPLEX RECEPTACLE

XX* → MOUNTING HEIGHT, ON-CENTER
XXXX → RECEPTACLE TYPE/QUANTITY
[XXXX] [XXA] = VOLTS/AMPS
DED = DEDICATED CIRCUIT REQ'D.

SPECIAL RECEPTACLE

XX* → MOUNTING HEIGHT, ON-CENTER
XXXX → RECEPTACLE TYPE
[XXXX] [XXA] [XP] [XW] = VOLTS, C.T AMPACITY, POLES, WIRES
NEMA [XXXXR] = NEMA TYPE (REFER TO ELEC. DEVICE SCHEDULE IF NOT PRESENT)

DATA OUTLET

XX → QUANTITY OF JACKS REQUIRED (RJ-45, CAT6, TYPICAL - REFER TO DIV 27 SPECS) (REFER TO ADJACENT AV-BOX OR RECEPTACLE FOR REQUIRED MOUNTING HEIGHT)

FLOORBOX

FB-XX → FLOOR BOX - [NUMBER DESIGNATION] (REFER TO FLOOR BOX SCHEDULE ON AV SCHEDULES DRAWINGS)

XXX → QUANTITY OF JACKS REQUIRED (RJ-45, CAT6, TYPICAL - REFER TO DIV 27 SPECS)
FB-XX [XIX] → POWER/DATA REQUIREMENT (WHEN SHOWN)
XXXX → RECEPTACLE TYPE/QUANTITY
[XXXX] [XXA] = VOLTS/AMPS
DED = DEDICATED CIRCUIT REQ'D.

POKE-THRU DEVICE

PTD-XX → POKE-THRU DEVICE - [NUMBER DESIGNATION] (REFER TO FLOOR BOX SCHEDULE ON AV SCHEDULES DRAWINGS)
PTD-XX → QUANTITY OF JACKS REQUIRED (RJ-45, CAT6, TYPICAL - REFER TO DIV 27 SPECS)
XXXX → RECEPTACLE TYPE/QUANTITY
[XXXX] [XXA] = VOLTS/AMPS
DED = DEDICATED CIRCUIT REQ'D.

CEILING LOUDSPEAKER (LOUDSPEAKER ROUGH-IN)

RECESSED/FLUSH MOUNTED
S → SPEAKER TYPE (REFER TO DEVICE SCHEDULE ON AV SCHEDULES DRAWING)

SURFACE/PENDANT MOUNTED

S → SPEAKER TYPE (REFER TO DEVICE SCHEDULE ON AV SCHEDULES DRAWING)

CEILING BOXES

MOUNTED IN FINISHED CLG
[XX-XX] → BOX TYPE
[XIX] = GANG TYPE BOX
[XIX] = NEMA TYPE BOX SIZE (REFER TO ELEC. DEVICE SCHEDULE FOR DEPTH & TYPE INFORMATION)
JB = 4-1/8" SQUARE BOX TYPE (REFER TO ELEC. DEVICE SCHEDULE FOR DEPTH & TRIM RING INFO)

SURFACE/STRUCTURE MOUNTED

[XX-XX] → BOX TYPE
[XIX] = GANG TYPE BOX
[XIX] = NEMA TYPE BOX SIZE (REFER TO ELEC. DEVICE SCHEDULE FOR DEPTH & TYPE INFORMATION)
JB = 4-1/8" SQUARE BOX TYPE (REFER TO ELEC. DEVICE SCHEDULE FOR DEPTH & TRIM RING INFO)

PROJECTION SCREEN MOTOR

M → REFER TO MOTORIZED PROJECTION SCREEN SCHEDULE ON AV SCHEDULES SHEET FOR POWER REQUIREMENTS
LVC → INDICATES LOW-VOLTAGE CONTROLLER UNIT, WHEN PRESENT (REFER TO MOTORIZED PROJECTION SCREEN SCHEDULE ON AV SCHEDULES SHEET)

CEILING DUPLEX RECEPTACLE

XXXX → RECEPTACLE TYPE
[XXXX] [XXA] = VOLTS/AMPS
DED = DEDICATED CIRCUIT REQ'D.

CEILING SPECIAL RECEPTACLE

XXXX → RECEPTACLE TYPE
[XXXX] [XXA] [XP] [XW] = VOLTS, C.T AMPACITY, POLES, WIRES
NEMA [XXXXR] = NEMA TYPE (REFER TO ELEC. DEVICE SCHEDULE IF NOT PRESENT)

CEILING RECEPTACLE

XX → QUANTITY OF JACKS REQUIRED (RJ-45, CAT6, TYPICAL - REFER TO DIV 27 SPECS) (REFER TO ADJACENT AV-BOX OR RECEPTACLE FOR REQUIRED MOUNTING HEIGHT)

CONDUIT/WIRE ROUTING

BOX DESIGNATION → DESTINATION BOX
TO AER-1
SIGNAL TYPE
QUANTITY OF CONDUIT **
CONDUIT SIZE
SPK (2) 3/4" 1@S16
WIRE TYPE BY AV
WIRE QUANTITY BY AV
CONDUIT BY E.C.
NOTE: ** QUANTITY IS (1) UNLESS NOTED DIFFERENTLY.

AV EQUIPMENT TAG

NUMBER PREFIX
AER
01
NUMBER SUFFIX
NOTE: SEE AUDIOVISUAL EQUIPMENT SCHEDULE

CONDUIT SEPARATION DETAIL / DATA

CONDUIT LOCATION SEPARATION DATA

POWER CONDUIT TYPE	AV EQUIPMENT LOCATION	UNDER 60 AMP	60 TO 120 AMP
EMT	CONTROL ROOM	OK	30 IN
RIGID STEEL	CONTROL ROOM	OK	OK
EMT	HOUSE MIX/PULL PATH	OK	4 FT
RIGID STEEL	HOUSE MIX/PULL PATH	OK	1 FT
EMT	PLATFORM, PIT	OK	4 FT
RIGID STEEL	PLATFORM, PIT	OK	1 FT
EMT	EQUIPMENT ROOMS	OK	30 IN
RIGID STEEL	EQUIPMENT ROOMS	OK	OK

POWER CONDUCTOR SIZING DATA

DISTANCE	CONDUCTOR SIZE
0' - 100'	#12 AWG CONDUCTORS
100' - 175'	#10 AWG CONDUCTORS
175' - 250'	#8 AWG CONDUCTORS
250' - 400'	#6 AWG CONDUCTORS

*CONDUCTOR SIZING BASED ON 1200W LOAD @ 120V AC

NO LARGE POWER TRANSFORMERS OR MOTORS SHOULD BE LOCATED WITHIN 50 FEET OF RECORDING OR BROADCAST STUDIOS, STAGES, WORSHIP PLATFORMS, CONTROL ROOMS, AV EQUIPMENT ROOMS, OR SOUND CONTROL POSITIONS.

CONDUIT SEPARATION DATA

AUDIO / VIDEO CONDUIT TYPE	POWER CONDUIT TYPE	SEPARATION DISTANCE		
		UNDER 20 AMP	ABOVE 20 AMP	ABOVE 120 AMP
PVC	PVC	4 FT	12 FT	NO
EMT	EMT	2 FT	4 FT	NO
EMT	RIGID	4 IN	1 FT	4 FT
RIGID	RIGID	1 IN	4 IN	16 IN

*AMPERAGE IN CONDUIT IS THE SUM OF ALL CURRENT CONDUCTORS IN THE PIPE. NO DESIGNATES A CONDITION THAT SHOULD NOT BE DONE.

ELECTRICAL WALL BOX DIMENSIONS AND ORIENTATION

HORIZONTAL VERTICAL

FLOOR/CEILING

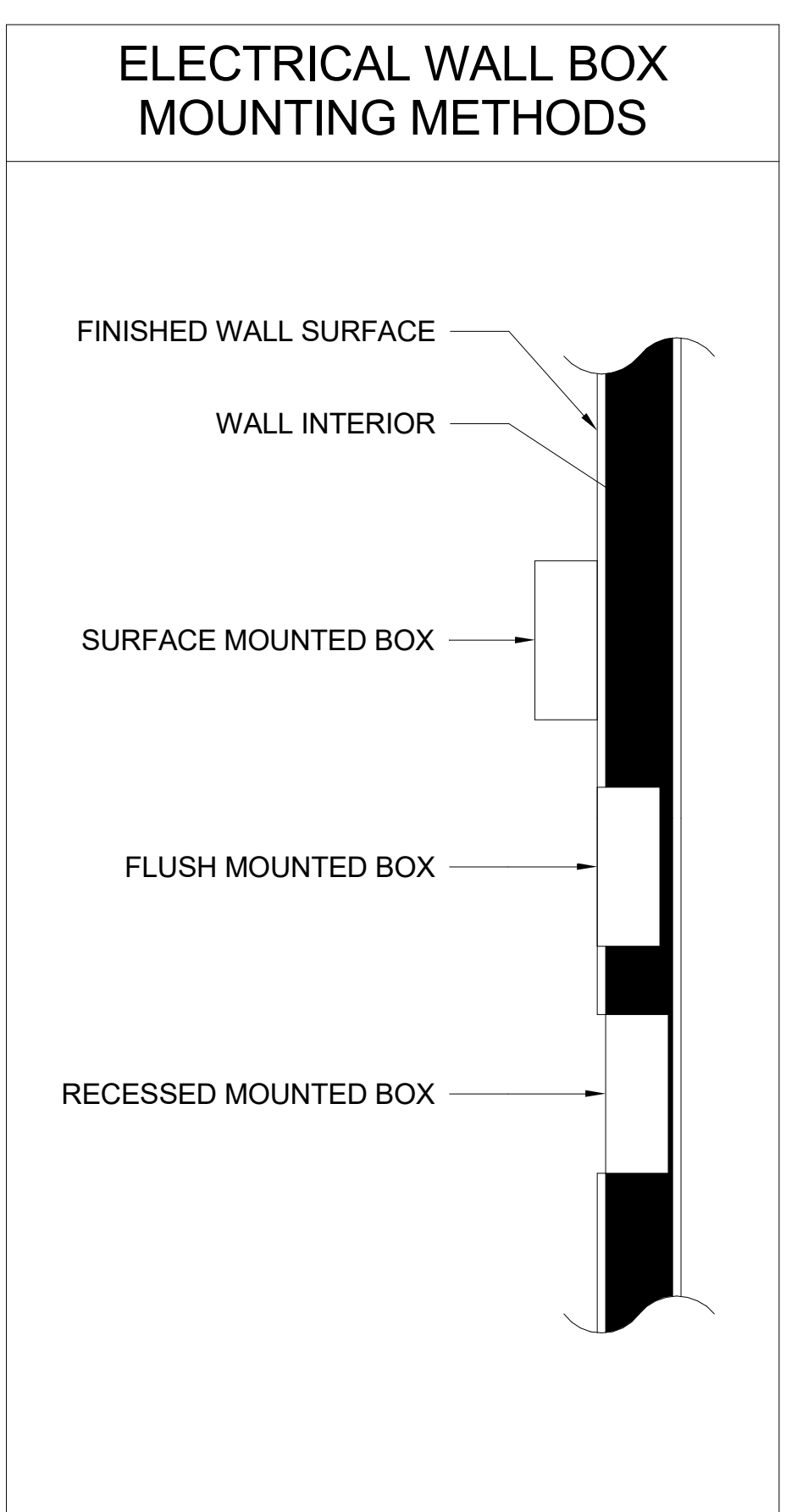
B.F.F.
B.F.C.

A.F.C.
A.F.F.

FLOOR/CEILING

DRAWING INDEX

Sheet Number	Sheet Name
AV000	AV COVER SHEET - SYMBOLS, NOTES, & DIVISION OF SCOPE SCHEDULE
AV100	AV SYSTEMS - LEVEL 1 - PLAN
AV200	AV SYSTEMS - LEVEL 1 - RCP
AV300	AV INFRASTRUCTURE - LEVEL 1 - PLAN
AV400	AV INFRASTRUCTURE - LEVEL 1 - RCP
AV500	AV CONDUIT RISER
AV600	AV SCHEDULES
AV700	AV SECTION AND ELEVATION VIEWS
AV800	AV DETAILS
AV900	AV SCHEMATICS - SIM/CTRL SYSTEMS
AV901	AV SCHEMATICS - DEBRIEF SYSTEMS



AUDIOVISUAL DIVISION OF SCOPE SCHEDULE

Project Items	Furnished By	Installed By	Configured/Programmed By	Notes
Power outlets & receptacles: 120V and 208V; branch wiring, etc...	EC	EC	N/A	
Data outlets & jacks; structured cabling, patch panels, etc...	TC	TC	TC	
Data network switches, routers, firewall hardware, etc...	OFE	OFE	OFE	AV network hardware by AVC, Enterprise network hardware by Owner
Low-Voltage pathway, including cable-tray, J-hooks, rings etc...	EC	EC	N/A	
Low & Medium-Voltage pathway, including conduit, wall-boxes, j-boxes, NEMA enclosures and flush boxes, pull-string & fittings	EC	EC	N/A	
Low & Medium-Voltage specialty enclosures, including: display backboxes, projector service boxes/enclosures, floor-boxes and fittings, specialty wall-boxes	EC	EC	N/A	
Low-Voltage wiring/cabling and connectivity, including: AV cabling, terminations, connectors and custom panels and plates	AVC	AVC	AVC	
Low-Voltage control systems, including: cabling, processors, programming, and interface to devices via TCP/IP, RS-232/422/485, relay/contact, digital and analog I/O	AVC	AVC	AVC	
Audio systems, installation and programming, including: Processors, DSP, loudspeakers, loudspeaker enclosures, amplifiers, distribution & consolidation devices, devices, etc...	AVC	AVC	AVC	
Video Systems hardware and installation, including: Displays, Projectors, Routers, Processors, Transport, including encoders/decoders/transcoders, Monitors, Mounts/Stands and related hardware & devices, etc...	AVC	AVC	AVC	
Audiovisual furniture and accessories, such as: Lecterns, podiums, AV/technology workstations/benches	FF&E	FF&E	N/A	

Key

AVC - Audiovisual Contractor (under delayed-bid & award)
TC - Telecommunications/Structured Cabling Contractor
GC - General Contractor
OFE - Owner Furnished Equipment
EC - Electrical Contractor
OFOI - Owner Furnished, Owner Installed
FF&E - Furniture/Furnishings Vendor/Contractor

ABBREVIATIONS

AFF	ABOVE FINISHED FLOOR	ICOM/IC	INTERCOM	PB	PULL BOX
ATT	ATTENUATOR	IDF	INTERMEDIATE DISTRIBUTION FRAME	PBX	PRIVATE BRANCH EXCHANGE
AV	AUDIO VISUAL	IG	ISOLATED GROUND	POE	POWER OVER ETHERNET
AVL	AUDIOVISUAL LIGHTING	ISO	ISOLATION	PROJ	PROJECTOR
BSRH	BUILDING STANDARD RECEPTACLE HEIGHT	LR	LEFT/RIGHT	BSRH	STANDARD BUILDING RECEPTACLE HEIGHT
BSRH	BUILDING STANDARD SWITCH HEIGHT	SJ	SPEAKER JUNCTION BOX	SMOF	SINGLE-MODE OPTICAL FIBER
CD	COMPACT DISC	MC	MAIN CROSS-CONNECT	SYNC	SYNCHRONIZATION
CH	CHANNEL	MCS	MULTIMEDIA COMMUNICATION SYSTEM		
CKT	CIRCUIT	MDF	MAIN DISTRIBUTION FRAME		
CLG	CEILING	MH	MAINTENANCE HOLE	TEMP	TEMPORARY
DA	DISTRIBUTION AMP	MIC	MICROPHONE	TGB	AUDIO VIDEO GROUNDING BUSBAR
DIA	DIMETER	MIX	MIXER	TSR	AUDIO VIDEO SERVICE ENTRANCE ROOM
DIM	DIMENSION	MMOF	MULTI-MODE OPTICAL FIBER	TYP	TYPICAL
DWG	DRAWING	MOD	MODULATOR	UNBAL	UNBALANCED
ELEC	ELECTRICAL	MON	MONITOR	UNLN	UNLESS NOTED OTHERWISE
EQUIP	EQUIPMENT	MTD	MOUNTED	UPS	UNINTERRUPTED POWER SUPPLY
GEN	GENERATOR	NIC	NOT IN CONTRACT	UTP	UNSHIELDED TWISTED PAIR
GEN	GENERATOR	OC	ON CENTER	VID	VIDEO
HF	HIGH FREQUENCY	OD	OUTSIDE DIAMETER	VJ	VIDEO JUNCTION BOX
HORIZ	HORIZONTAL	OFE	OWNER FURNISHED EQUIPMENT	W	WATT
				WI	WITH
				W/O	WITHOUT

- ### GENERAL INFORMATION & DIVISION OF LABOR
- TERMS:**
FURNISH = PROVIDE AND INSTALL.
PROVIDE = DELIVER TO CUSTOMER IN BOX.
INSTALL = TAKE PROVIDED PIECE AND INSTALL PER DRAWING AND SPEC.
- ELECTRICAL CONTRACTOR:**
- ELECTRICAL CONTRACTOR SHALL FURNISH AND INSTALL ALL CONDUIT AND BOXES ASSOCIATED WITH THE AUDIOVISUAL SYSTEMS INFRASTRUCTURE AS SHOWN ON THE INFRASTRUCTURE DRAWINGS.
 - ELECTRICAL CONTRACTOR SHALL SUPPLY ALL JUNCTION BOXES FOR THE AV SYSTEMS WITH APPROPRIATE COVERS. ALL UNUSED OR 'FUTURE' BOXES SHALL BE PROVIDED WITH BLANK COVERS TO MATCH OTHER DIV. 26 COVER AND DEVICE PLATES.
 - ALL CONDUITS NOT SPECIFICALLY IDENTIFIED SHALL BE 3/4".
 - ALL CONDUITS BELOW GRADE SHALL BE PVC OR AS REQUIRED BY CODE. ALL CONDUITS ABOVE GRADE SHALL BE EMT OR AS REQUIRED BY CODE.
 - NO CONDUIT SHALL BE INSTALLED WITH MORE THAN THREE (3) 90 DEGREE BENDS. IF A CONDUIT RUN REQUIRES MORE THAN THREE BENDS OR IF THE CONDUIT RUN IS IN EXCESS OF 150' IN TOTAL LENGTH, INSERT A PULL BOX OR USE THE NEXT LARGER SIZE CONDUIT.
 - ALL CONDUITS TO BE LABELED AT THE SOURCE BOX WITH THE DESTINATION BOX IN A CLEAR AND LOGICAL MANNER.
 - ENDS OF ALL CONDUITS ARE TO BE DEBURRED AND SHALL HAVE AN APPROPRIATE BUSHING INSTALLED.
 - ELECTRICAL CONTRACTOR SHALL SUPPLY A POLY PULL-LINE IN EACH CONDUIT. WHERE CALLED OUT ON THE RISER DIAGRAMS, A SPARE OR SECONDARY PULL STRING SHALL BE PROVIDED.
 - ALL LINE VOLTAGE WIRE FOR THE SOUND AND VIDEO SYSTEMS SHALL BE SUPPLIED AND INSTALLED BY THE ELECTRICAL CONTRACTOR.
 - LINE VOLTAGE CONDUITS SHALL MAINTAIN A MINIMUM OF 24" SEPARATION FROM AUDIO SIGNAL CONDUITS EXCEPT TO CROSS AT 90° ANGLE WHEN NECESSARY.
 - ALL AV FLOOR POCKETS INCLUDING COVER PLATES AND LIDS SHALL BE SUPPLIED AND INSTALLED BY THE ELECTRICAL CONTRACTOR.
 - PROVIDE A #6 TECHNICAL GROUND WIRE FROM EACH MAIN OR FIXED EQUIPMENT RACK TO THE LOCAL TELECOMMUNICATIONS GROUNDING BUS BAR (TGBB). TELECOMMUNICATIONS MAIN GROUNDING BUS BAR (TMGB) - WHICHEVER IS NEAREST OR IN THE ABSENCE OF A TECHNOLOGY GROUNDING SYSTEM. THE MAIN GROUNDING BAR OF THE BUILDING SERVICE ENTRANCE MAIN ELECTRICAL PANEL (MDP/BSP).
- AV CONTRACTOR:**
- ALL LOW VOLTAGE WIRE FOR THE AUDIOVISUAL SYSTEMS SHALL BE SUPPLIED AND INSTALLED BY THE AV CONTRACTOR.
 - NO WIRE SPLICES ALLOWED. ALL INTERCONNECTIONS MUST USE CONNECTORS, TERMINAL BLOCKS OR OTHER FIXED APPROVED MEANS (REFER TO SPECIFICATIONS 27 41 XX)
 - ENGRAVED PANELS IN FLOOR BOXES AND ON WALL PLATES SHALL BE FURNISHED AND INSTALLED BY THE AV CONTRACTOR. REFER TO SPECIFICATIONS FOR TYPE, TEXT, FINISH AND COLOR INFORMATION.
 - REFER TO SPECIFICATIONS FOR ADDITIONAL INSTALLATION DETAILS.



Project

Consultant



ABD Engineering & Design
Architectural Acoustics • AV Design • Noise & Vibration
Portland Grand Rapids
833 SW 17th Ave., Suite 925 15 16th Ave. SW, Suite 650
Portland, OR 97205 Grand Rapids, MI 49503

Revisions

No.	Description	Date

Stamp

Issuance

**FOR
BIDDING**

Date
06/03/2024

Project Number

22093
EDA Award Number 07-79-07767
URI 116720

Drawing Title

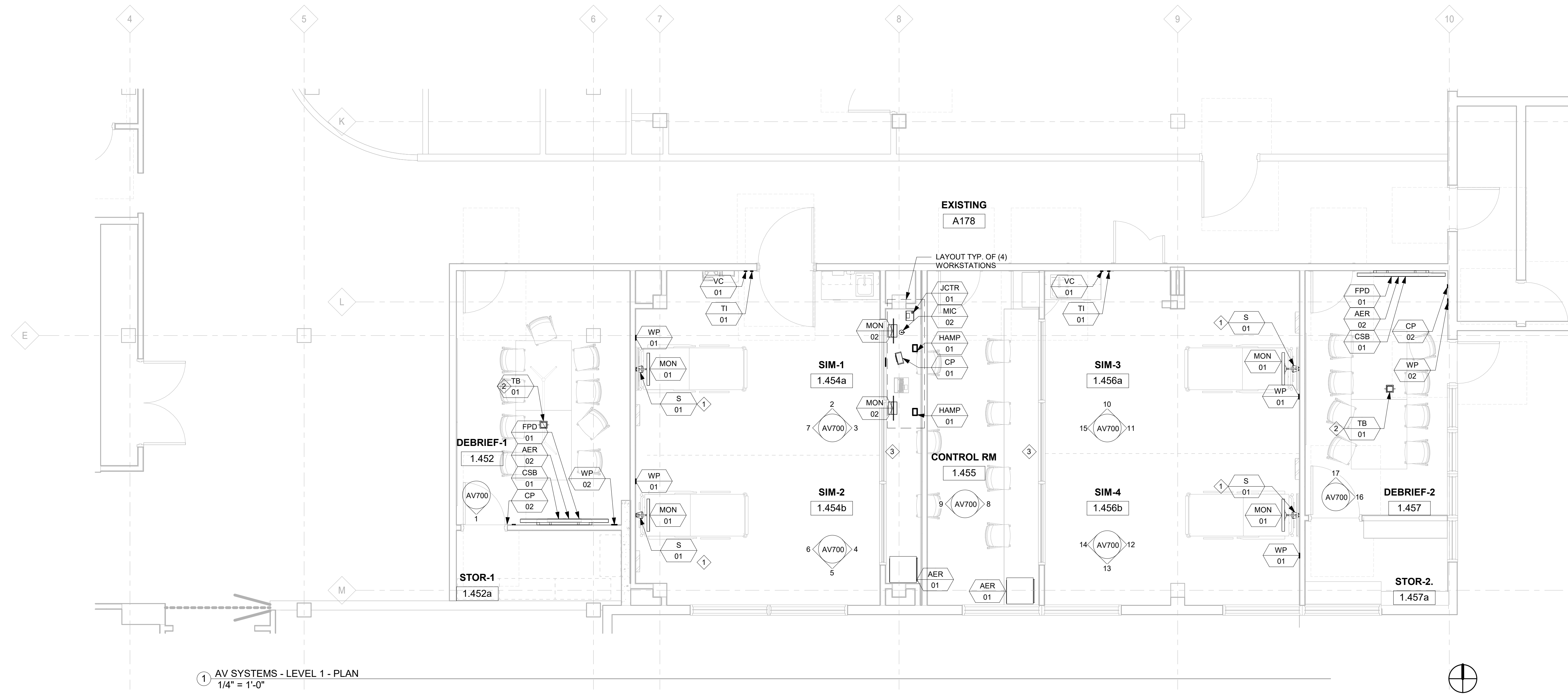
**AV SYSTEMS -
LEVEL 1 - PLAN**

Sheet No

AV100

KEYED NOTES:

- 1 COORDINATE HEADWALL PATIENT SIM SPEAKER WITH WALL AT HEAD OF BED SYSTEMS AND BED AVERAGE HEIGHT
- 2 COORDINATE INSTALLATION OF RECESSED IN-TABLE CAPTIVE CABLE BOX WITH FURNITURE VENDOR AND E.C./G.C.
- 3 AVC TO FREE-ROUTE CABLING IN RECESSED TROUGH IN COUNTERTOP TO RACK LOCATION. PROVIDE VELCRO WRAP AND BUNDLE CABLES LOGICALLY BETWEEN EQUIPMENT AND RACK LOCATION.



1 AV SYSTEMS - LEVEL 1 - PLAN
1/4" = 1'-0"

EGRESS PATH X



Project

Consultant



Revisions

No.	Description	Date

Stamp

Issuance

**FOR
BIDDING**

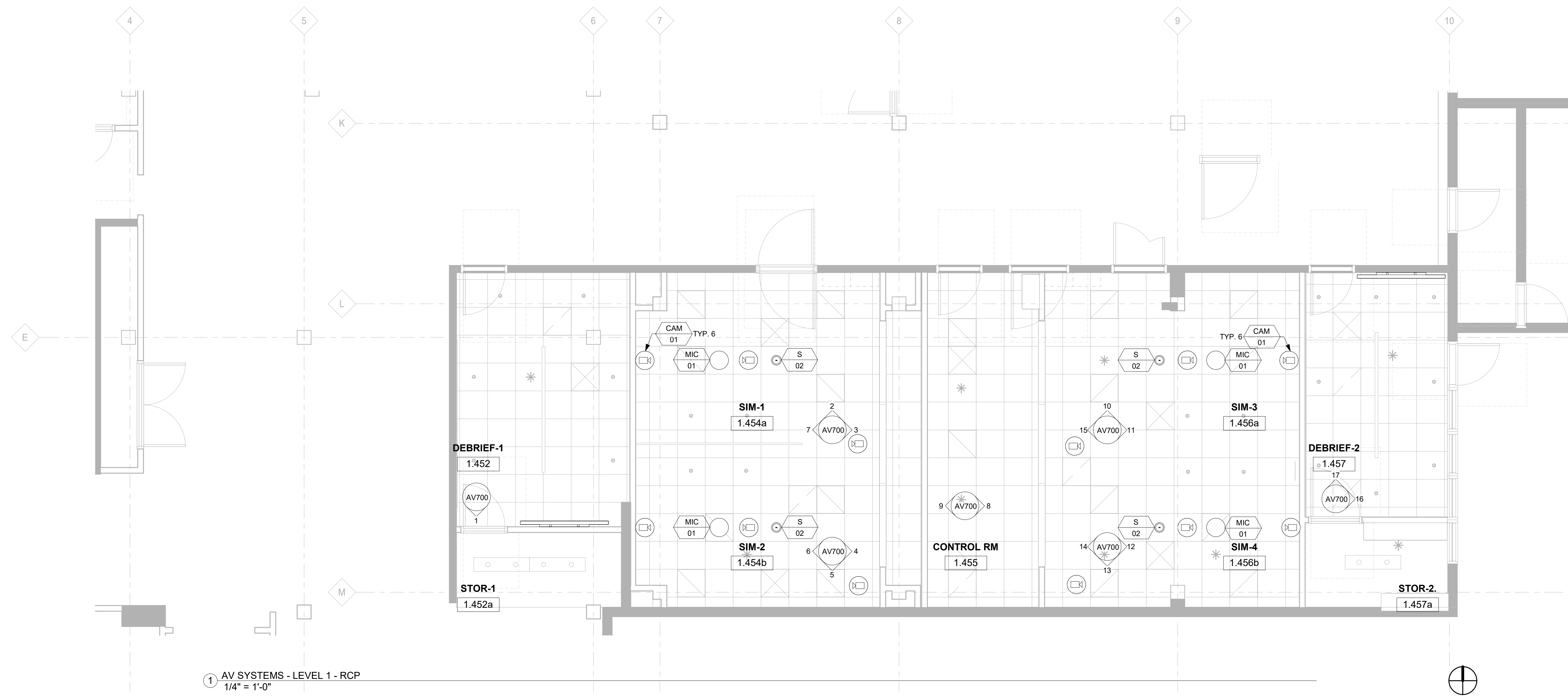
Date
06/03/2024

Project Number
22093
EDA Award Number 07-79-07767
URI 116720

Drawing Title
**AV SYSTEMS -
LEVEL 1 - RCP**

Sheet No.

AV200





Project

Consultant



Revisions

No.	Description	Date

Stamp

Issuance

**FOR
BIDDING**

Date

06/03/2024

Project Number

22093

EDA Award Number 07-79-07767
URI 116720

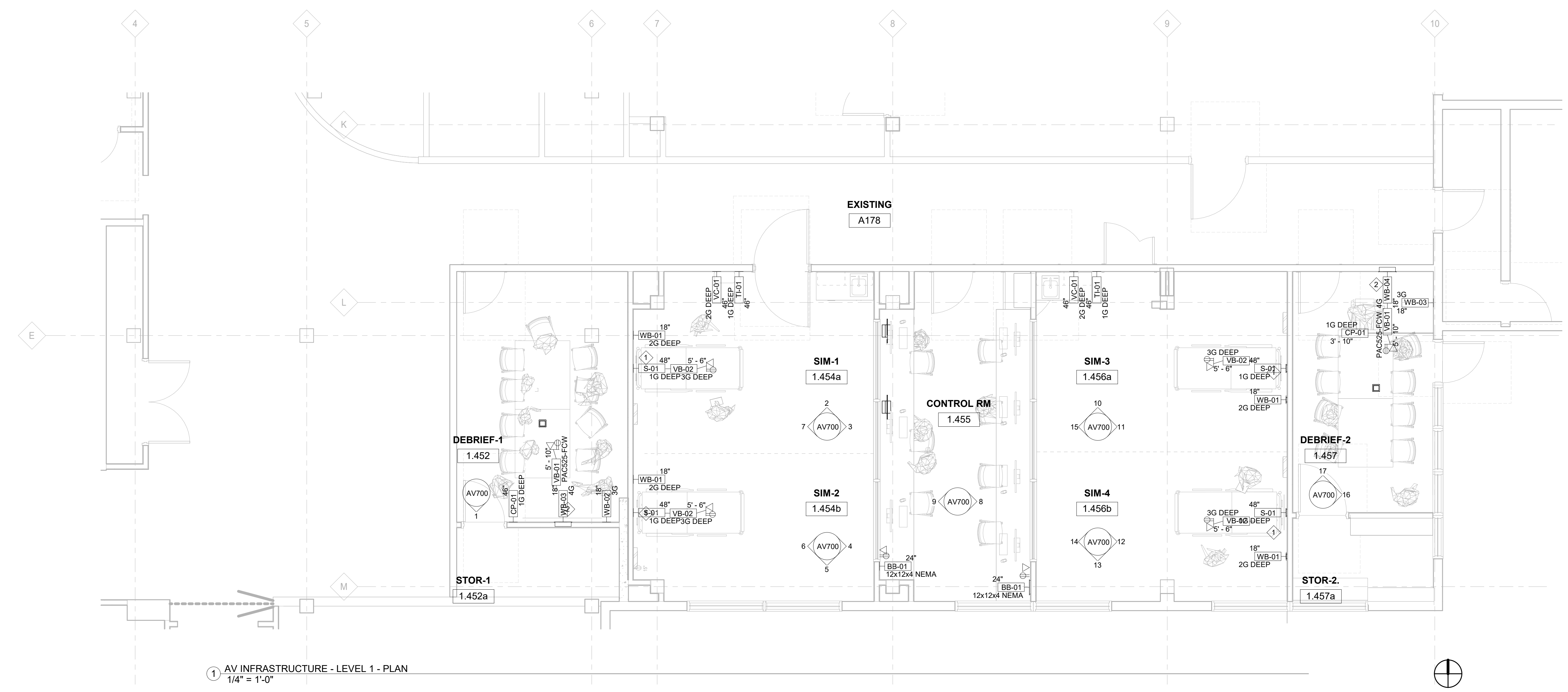
Drawing Title

**AV
INFRASTRUCTURE -
LEVEL 1 - PLAN**

Sheet No

AV300

- KEYED NOTES:**
- ① COORDINATE BOX LOCATION WITHIN WALL AT HEAD OF BED, WITH ADJACENT POWER/DATA AND INTEGRAL ARTICULATED MONITOR MOUNT, MONITOR ARM AND INTERFACE BY HEADWALL VENDOR.
 - ② COORDINATE LOCATION OF POWER AND DATA WITHIN BOTH: VB-02 (CHIEF/LEGRAND-AV PAC-525FCW) @ DISPLAY AND AER-02 (CREDENZA UNIT @ 18" AFF)



① AV INFRASTRUCTURE - LEVEL 1 - PLAN
1/4" = 1'-0"



Project

Consultant



Revisions

No.	Description	Date

Stamp

Issuance

**FOR
BIDDING**

Date

06/03/2024

Project Number

22093

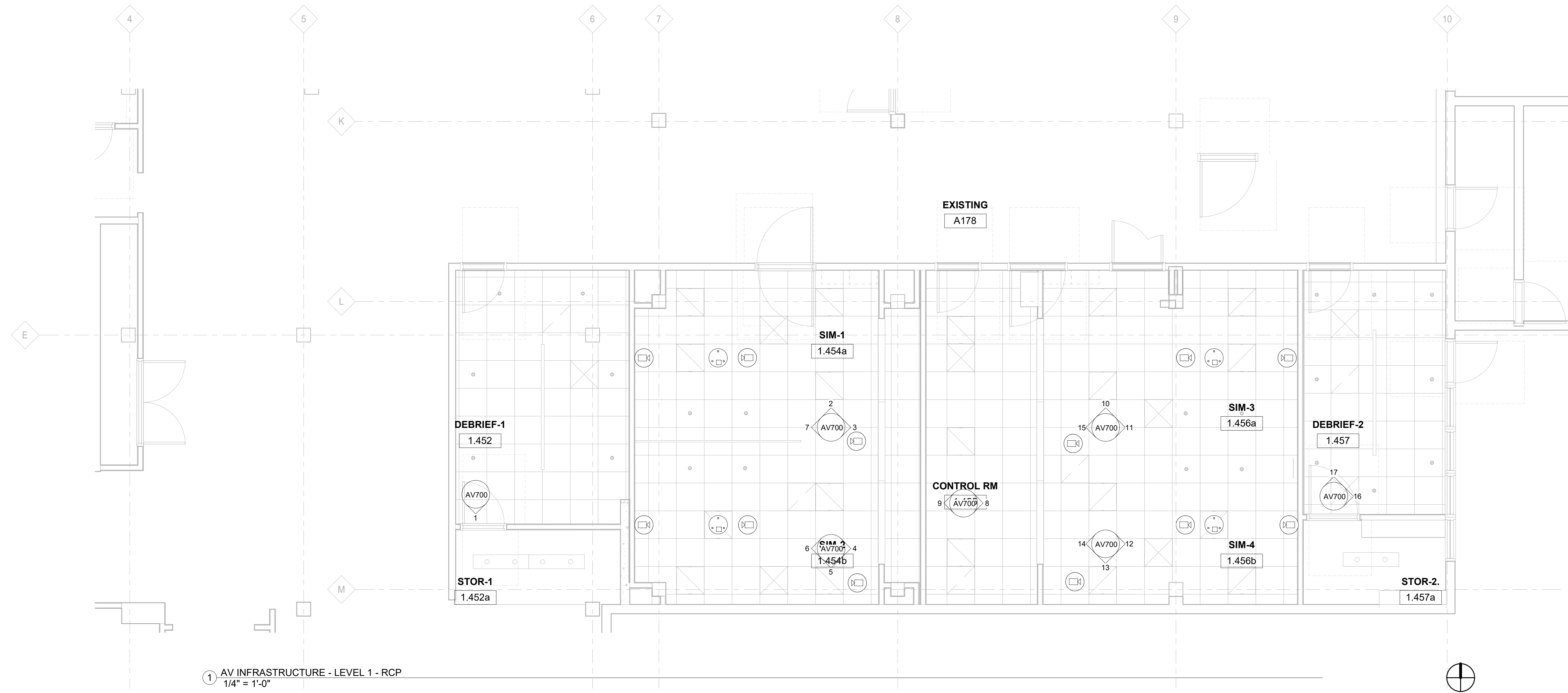
EDA Award Number 07-79-07767
URI 116720

Drawing Title

**AV
INFRASTRUCTURE -
LEVEL 1 - RCP**

Sheet No

AV400





Project

Consultant



Revisions

No.	Description	Date

Stamp

Issuance

**FOR
BIDDING**

Date

06/03/2024

Project Number

22093
EDA Award Number 07-79-07767
URI 116720

Drawing Title

AV CONDUIT RISER

Sheet No

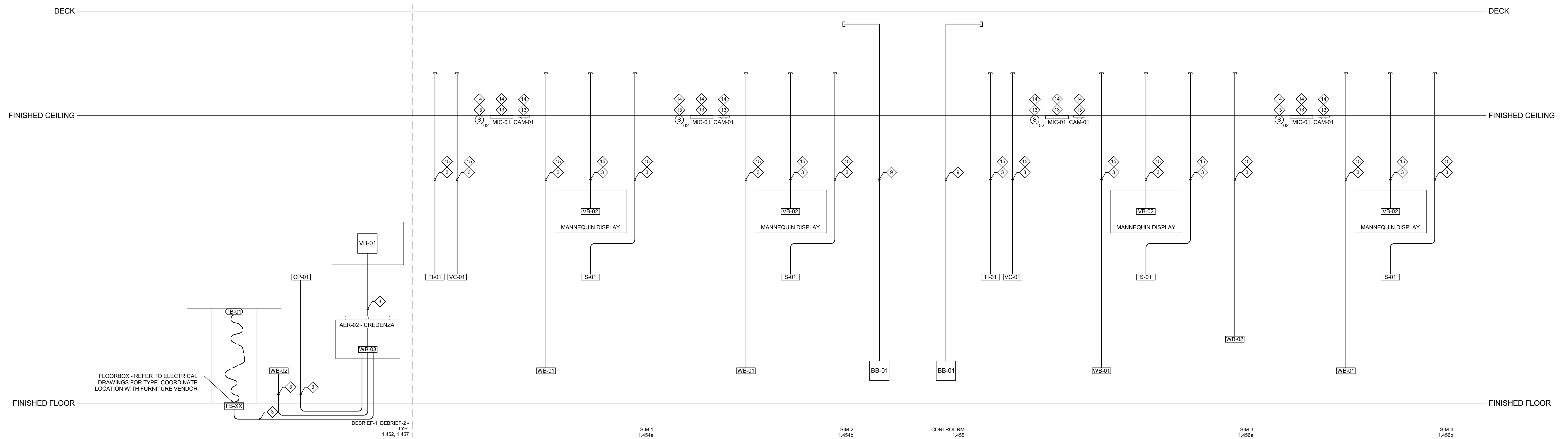
AV500

GENERAL NOTES:

- REFER TO AUDIOVISUAL BOX AND DEVICE SCHEDULE FOR AV EQUIPMENT DESIGNATIONS AND INFORMATION.
- ALL BOX HEIGHTS ARE TO HORIZONTAL CENTERLINE OF BOX ABOVE FINISHED FLOOR, UNLESS NOTED OTHERWISE.
- ALL UN-NOTED CONDUIT IS TO BE 3/4" MINIMUM TRADE SIZE.
- REFER TO AV AND ELECTRICAL PLANS FOR POWER AND DATA REQUIREMENTS FOR SPECIALTY BOXES/ENCLOSURES AND ADJACENT CONVENIENCE OUTLETS. RACEWAY SHOWN HERE IS FOR AV ONLY AND DOES NOT INCLUDE POWER/DATA RACEWAY.

RISER NOTES:

- SIZED APPROPRIATELY BY ELECTRICAL CONTRACTOR FOR CONDUIT QUANTITY AND ENTRY POINTS.
- (1) 3/4" C
- (1) 1" C
- (2) 1" C
- (2) 1-1/4" C & (1) 1" C
- (3) 2" C
- (1) 1-1/4" C
- (2) 1-1/4" C
- (3) 1-1/2" C
- (1) 1-1/4" C & (1) 1" C
- (3) 2-1/2" C
- DEVICE MOUNTED IN SPECIALTY RECESSED BACKBOX, REFER TO PLANS AND BOX AND DEVICE SCHEDULE ON AV SCHEDULES SHEET. COORDINATE INSTALLATION OF POWER AND DATA BOXES WITHIN. REFER TO DETAILS FOR BOX CONFIGURATION.
- QUANTITY OF DEVICES PER PLANS. REFER TO RCP DRAWINGS FOR QUANTITY PER ZONE.
- CEILING DEVICE CABLING RUNS FREE AIR IN ACCESSIBLE CEILING TO BB-01 CONDUIT STUBS.
- STUB TO NEAREST ACCESSIBLE CEILING SPACE.





Project

Consultant



Revisions	No.	Description	Date

Stamp

Issuance
FOR BIDDING
Date
06/03/2024

Project Number
22093
EDA Award Number 07-79-07767
URI 116720

Drawing Title
AV SCHEDULES

Sheet No
AV600

AV EQUIPMENT SCHEDULE			
AV EQUIPMENT		MOUNTING TYPE	DESCRIPTION
TYPE	NUMBER		
AER	01	FLOOR, STANDING	14RU ROLLING AV RACK/CABINET
AER	02	WALL, SURFACE	WALL MOUNTED AV CREDENZA
CAM	01	CEILING, FLUSH	CEILING MOUNT DOME CAMERA
CP	01	TABLETOP, SURFACE	10" TOUCH PANEL CONTROLLER
CP	02	WALL, SURFACE	5" WALL MOUNTED TOUCH PANEL
CSB	01	WALL, SURFACE	CONFERENCING SOUNDBAR/CAMERA/MIC UNIT
FPD	01	WALL, SURFACE	85" FLAT PANEL DISPLAY
HAMP	01	TABLETOP, SURFACE	HEADPHONE AMPLIFIER
JCTR	01	TABLETOP, SURFACE	PTZ JOYSTICK CONTROLLER
MIC	01	CEILING, FLUSH	BEAMFORMING CONFERENCING CEILING MICROPHONE
MIC	02	TABLETOP, SURFACE	DESKTOP GOOSENECK MIC
MON	01	WALL, SURFACE	CONFIDENCE MONITOR ON ARTICULATING ARM
MON	02	TABLETOP, SURFACE	DESKTOP MONITOR ON STAND
S	01	HEADWALL, SURFACE	PATIENT SIM SPEAKER
S	02	CEILING, FLUSH	6.5" DANTE CEILING LOUDSPEAKER, POE POWERED OVER NETWORK
TB	01	TABLETOP, FLUSH	TABLETOP CONNECTION BOX
TI	01	WALL, FLUSH	TELEPHONE INTERFACE, FOR USE WITH WALL-MOUNTED HEADSET
VC	01	WALL, FLUSH	VOLUME CONTROL
WP	01	WALL, FLUSH	ENCODER INTERFACE FOR MANIKINS AND NON-LAERDAL SOURCES, INCLUDING MONITORS/DIAGNOSTICS ETC.
WP	02	WALL, FLUSH	WALL INPUT PANEL (HDMI, XLR-M, FOR ALS XMITTER)

AV BOX SCHEDULE								
BOX #	LOCATION	TYPE	LEVEL	MOUNTING HEIGHT	MOUNTING TYPE	BOX & COVER PROVIDED BY	CONN. PLATE PROVIDED BY	NOTES
BB-01	CONTROL RM 1.455	12X12X4	LEVEL 1	2' - 0"	WALL, RECESSED	EC	AVC	
BB-01	CONTROL RM 1.455	12X12X4	LEVEL 1	2' - 0"	WALL, RECESSED	EC	AVC	
CP-01	DEBRIEF-1 1.452	1 GANG DEEP	LEVEL 1	3' - 10"	WALL, RECESSED	EC	AVC	
CP-01	DEBRIEF-2 1.457	1 GANG DEEP	LEVEL 1	3' - 10"	WALL, RECESSED	EC	AVC	
S-01	SIM-1 1.454a	1 GANG DEEP	LEVEL 1	4' - 0"	WALL, RECESSED	EC	AVC	
S-01	SIM-2 1.454b	1 GANG DEEP	LEVEL 1	4' - 0"	WALL, RECESSED	EC	AVC	
S-01	SIM-3 1.456a	1 GANG DEEP	LEVEL 1	4' - 0"	WALL, RECESSED	EC	AVC	
S-01	SIM-4 1.456b	1 GANG DEEP	LEVEL 1	4' - 0"	WALL, RECESSED	EC	AVC	
TI-01	SIM-1 1.454a	1 GANG DEEP	LEVEL 1	3' - 10"	WALL, RECESSED	EC	AVC	
TI-01	SIM-3 1.456a	1 GANG DEEP	LEVEL 1	3' - 10"	WALL, RECESSED	EC	AVC	
VB-02	DEBRIEF-1 1.452	CHIEFPAC 525	LEVEL 1	5' - 10"	WALL, RECESSED	EC	AVC	
VB-02	SIM-1 1.454a	3 GANG DEEP	LEVEL 1	5' - 6"	WALL, RECESSED	EC	AVC	
VB-02	SIM-2 1.454b	3 GANG DEEP	LEVEL 1	5' - 6"	WALL, RECESSED	EC	AVC	
VB-02	SIM-3 1.456a	3 GANG DEEP	LEVEL 1	5' - 6"	WALL, RECESSED	EC	AVC	
VB-02	SIM-4 1.456b	3 GANG DEEP	LEVEL 1	5' - 6"	WALL, RECESSED	EC	AVC	
VB-02	DEBRIEF-2 1.457	CHIEFPAC 525	LEVEL 1	5' - 10"	WALL, RECESSED	EC	AVC	
VC-01	SIM-1 1.454a	2 GANG DEEP	LEVEL 1	3' - 10"	WALL, RECESSED	EC	AVC	
VC-01	SIM-3 1.456a	2 GANG DEEP	LEVEL 1	3' - 10"	WALL, RECESSED	EC	AVC	
WB-01	SIM-1 1.454a	2 GANG DEEP	LEVEL 1	1' - 6"	WALL, RECESSED	EC	AVC	
WB-01	SIM-2 1.454b	2 GANG DEEP	LEVEL 1	1' - 6"	WALL, RECESSED	EC	AVC	
WB-01	SIM-3 1.456a	2 GANG DEEP	LEVEL 1	1' - 6"	WALL, RECESSED	EC	AVC	
WB-01	SIM-4 1.456b	2 GANG DEEP	LEVEL 1	1' - 6"	WALL, RECESSED	EC	AVC	
WB-02	DEBRIEF-1 1.452	3 GANG DEEP	LEVEL 1	1' - 6"	WALL, RECESSED	EC	AVC	
WB-03	DEBRIEF-1 1.452	4 GANG DEEP	LEVEL 1	1' - 6"	WALL, RECESSED	EC	AVC	
WB-03	DEBRIEF-2 1.457	3 GANG DEEP	LEVEL 1	1' - 6"	WALL, RECESSED	EC	AVC	
WB-04	DEBRIEF-2 1.457	4 GANG DEEP	LEVEL 1	1' - 6"	WALL, RECESSED	EC	AVC	



Project

Consultant



Revisions

No.	Description	Date

Stamp

Issuance

**FOR
BIDDING**

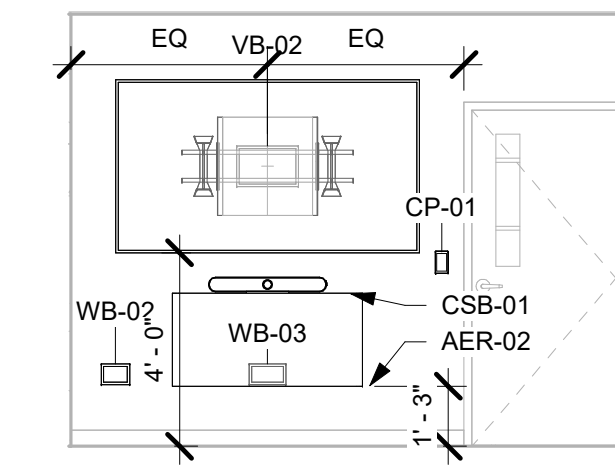
Date
06/03/2024

Project Number
22093
EDA Award Number 07-79-07767
URI 116720

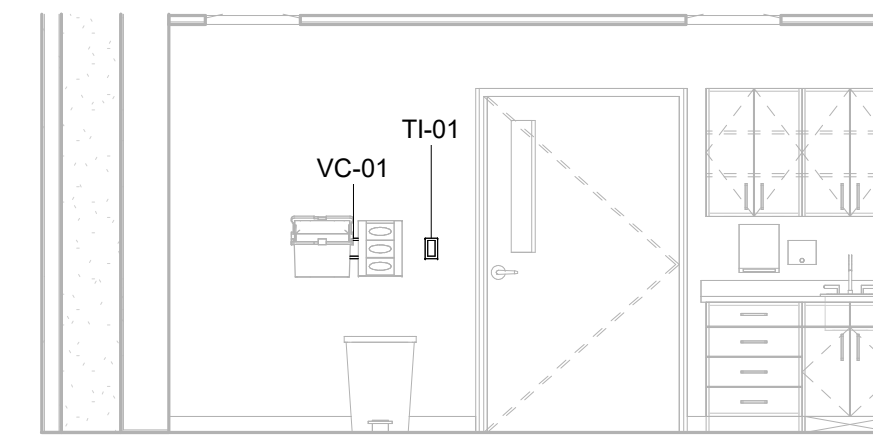
Drawing Title
**AV SECTION AND
ELEVATION VIEWS**

Sheet No.

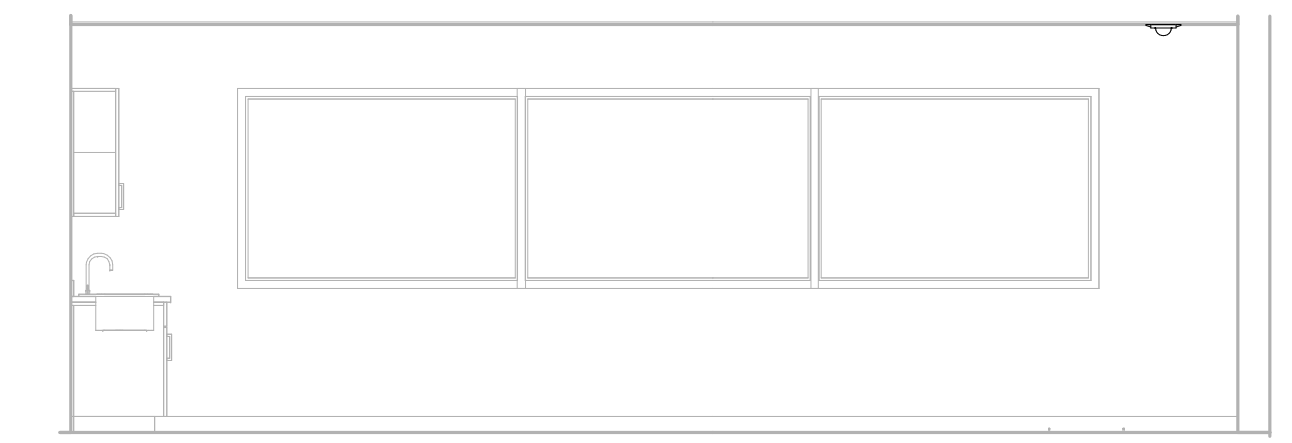
AV700



1.452 - DEBRIEF-1 - SOUTH
1/4" = 1'-0"

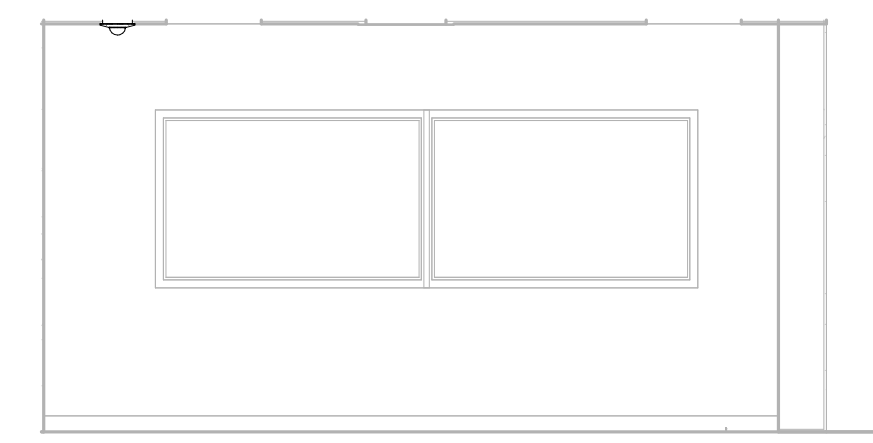


1.454a - SIM-1 - NORTH
1/4" = 1'-0"

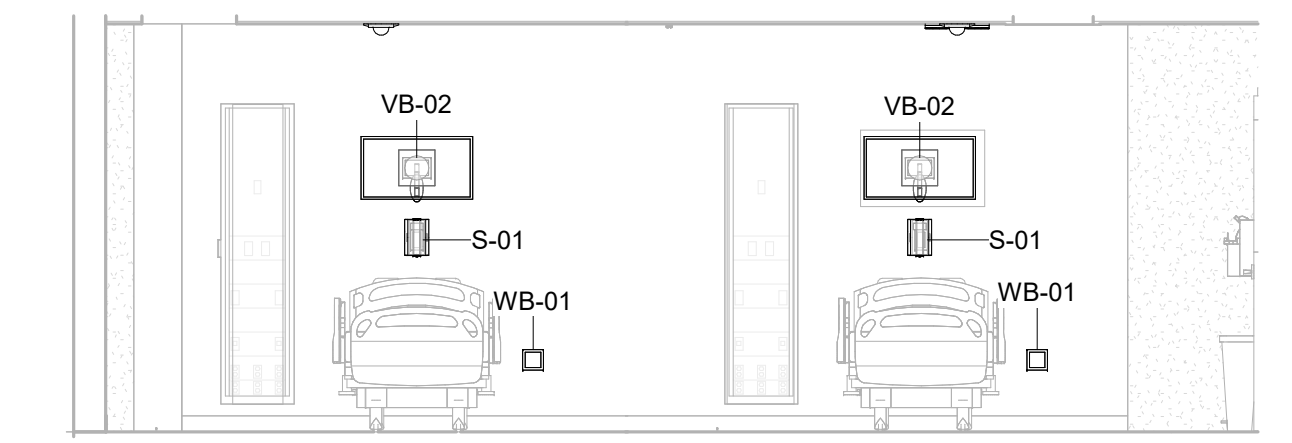


1.454a - SIM-1 - EAST
1/4" = 1'-0"

1.454b - SIM-2 - EAST
1/4" = 1'-0"

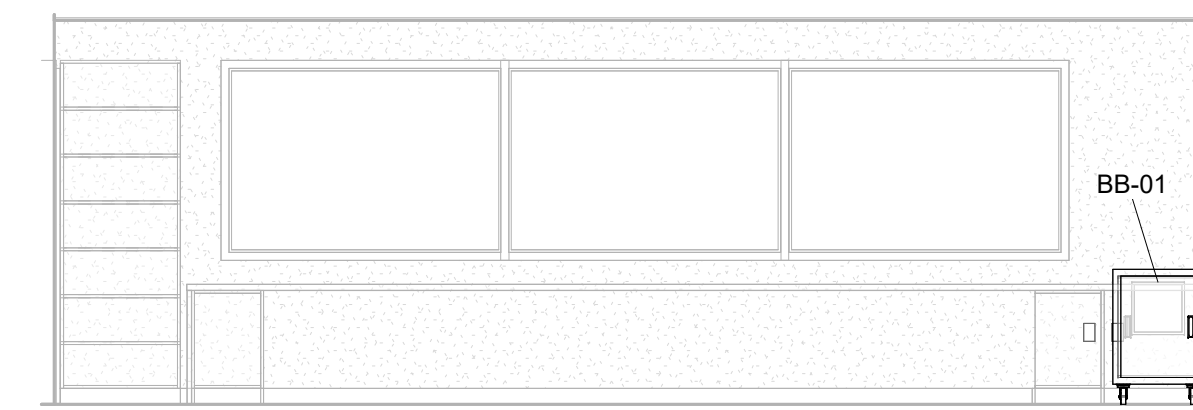


1.454b - SIM-2 - SOUTH
1/4" = 1'-0"

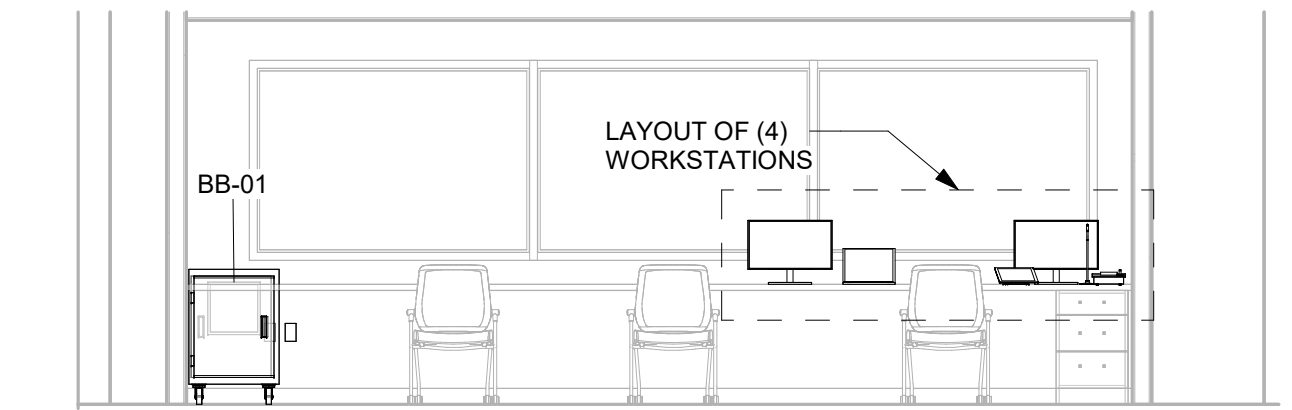


1.454a - SIM-1 - WEST
1/4" = 1'-0"

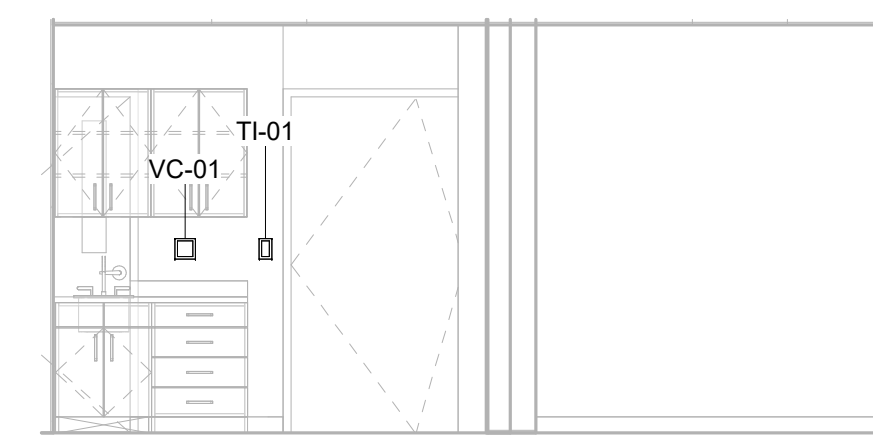
1.454b - SIM-2 - WEST
1/4" = 1'-0"



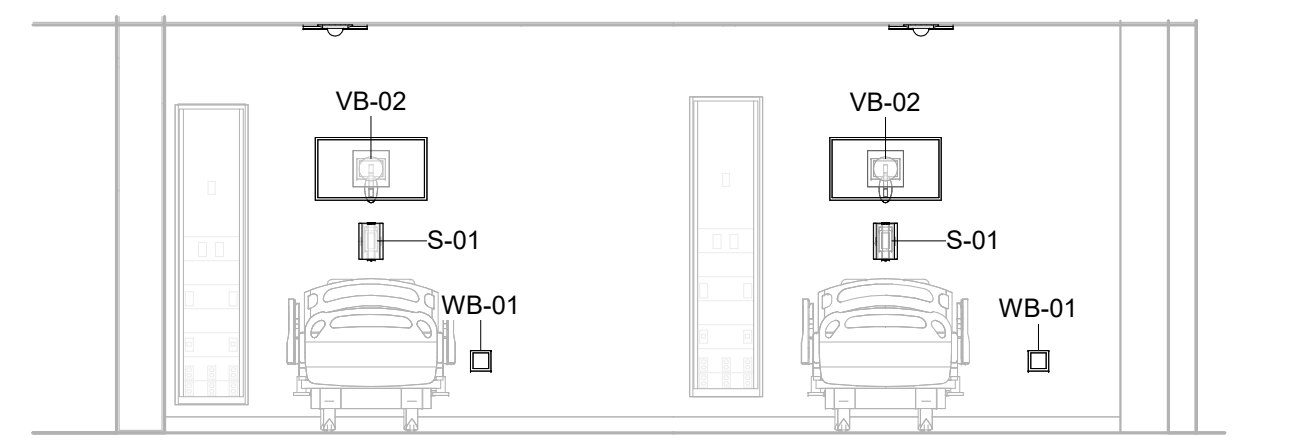
1.455 - CONTROL RM - EAST
1/4" = 1'-0"



1.455 - CONTROL RM - WEST
1/4" = 1'-0"

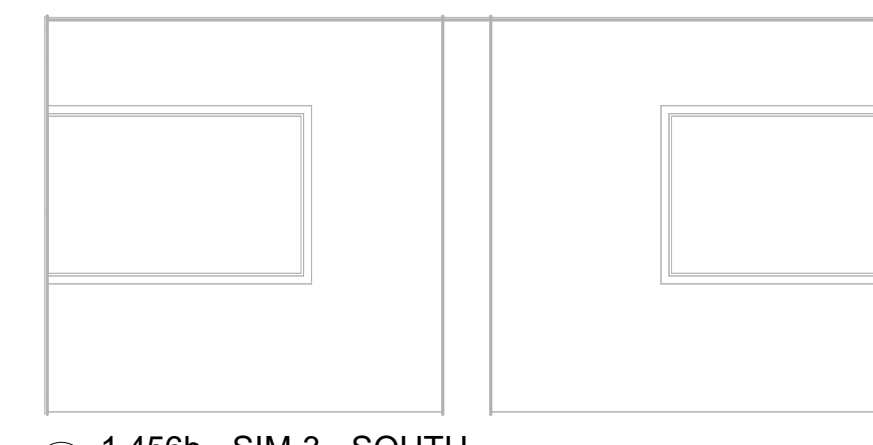


1.456a - SIM-3 - NORTH
1/4" = 1'-0"



1.456a - SIM-3 - EAST
1/4" = 1'-0"

1.456b - SIM-3 - EAST
1/4" = 1'-0"

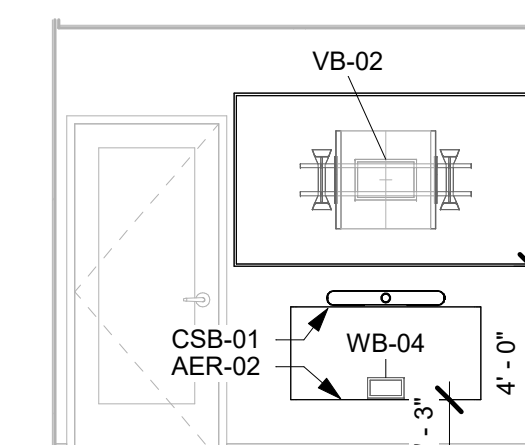


1.456b - SIM-3 - SOUTH
1/4" = 1'-0"

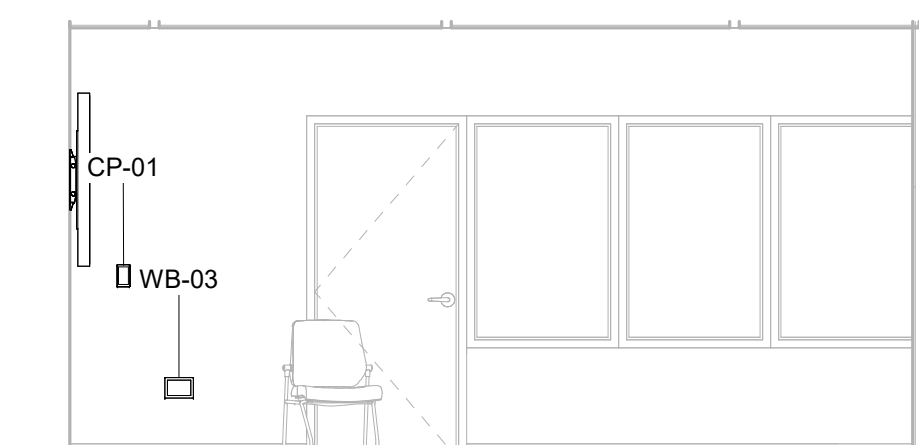


1.456b - SIM-3 - WEST
1/4" = 1'-0"

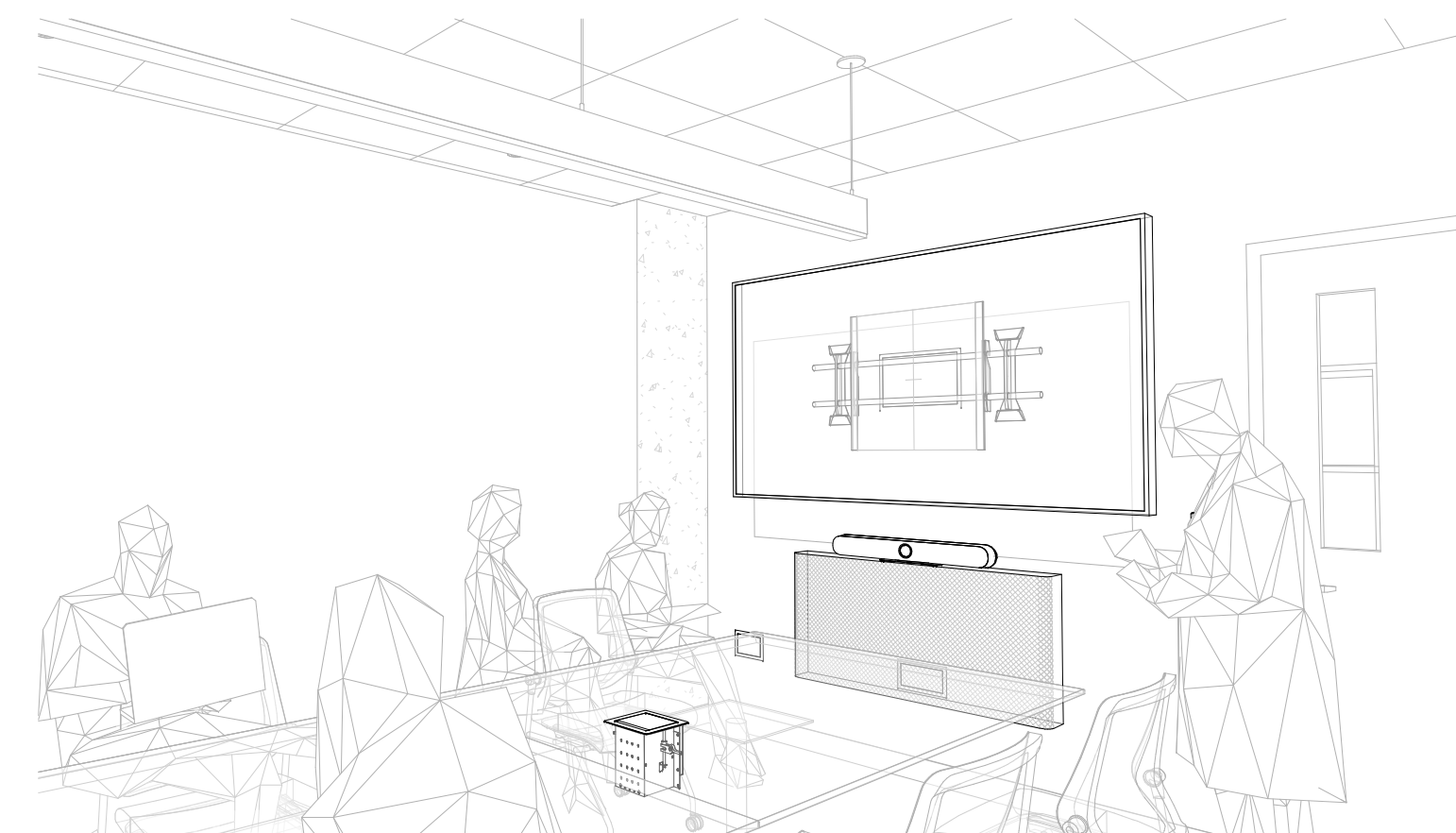
1.456a - SIM-3 - WEST
1/4" = 1'-0"



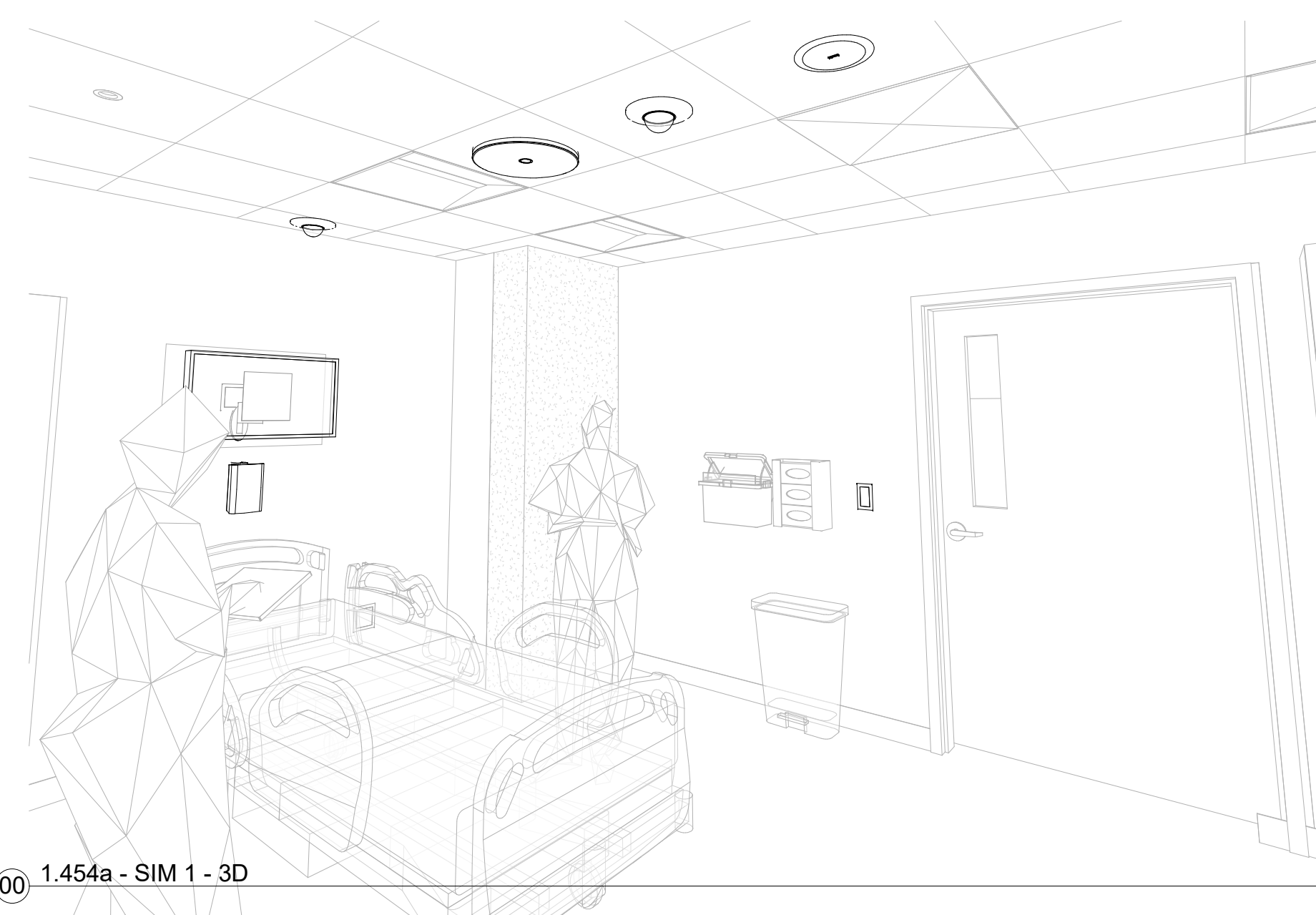
1.457 - DEBRIEF-2 - NORTH
1/4" = 1'-0"



1.457 - DEBRIEF-2 - EAST
1/4" = 1'-0"



1.452 - DEBRIEF-1 - 3D



1.454a - SIM 1 - 3D



Project

Consultant



Revisions

No.	Description	Date

Stamp

Issuance

**FOR
BIDDING**

Date

06/03/2024

Project Number

22093

EDA Award Number 07-79-07767

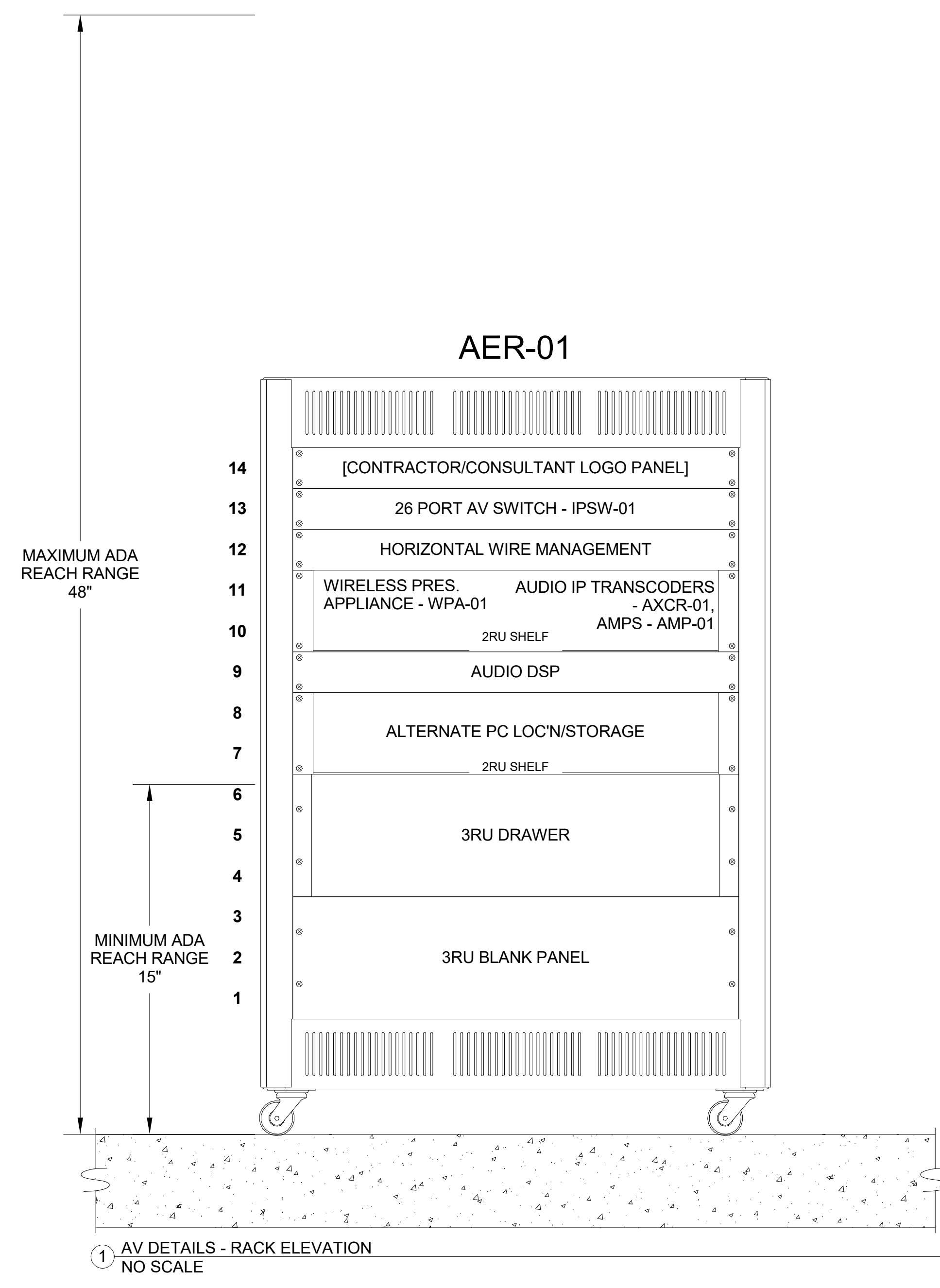
URI 116720

Drawing Title

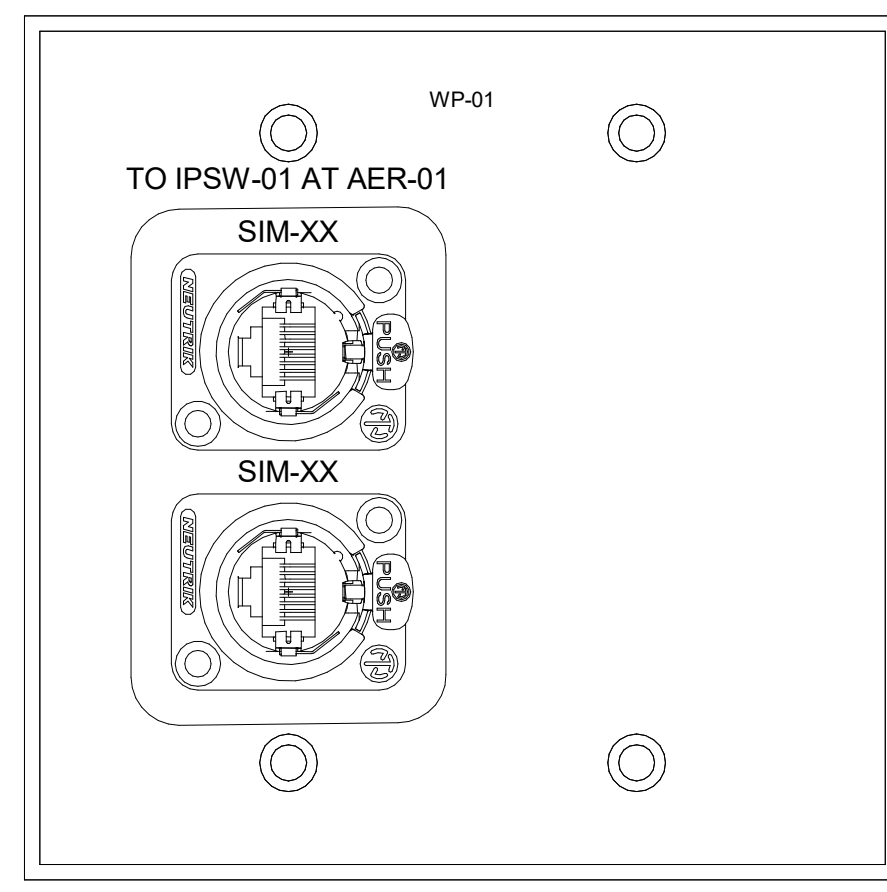
AV DETAILS

Sheet No

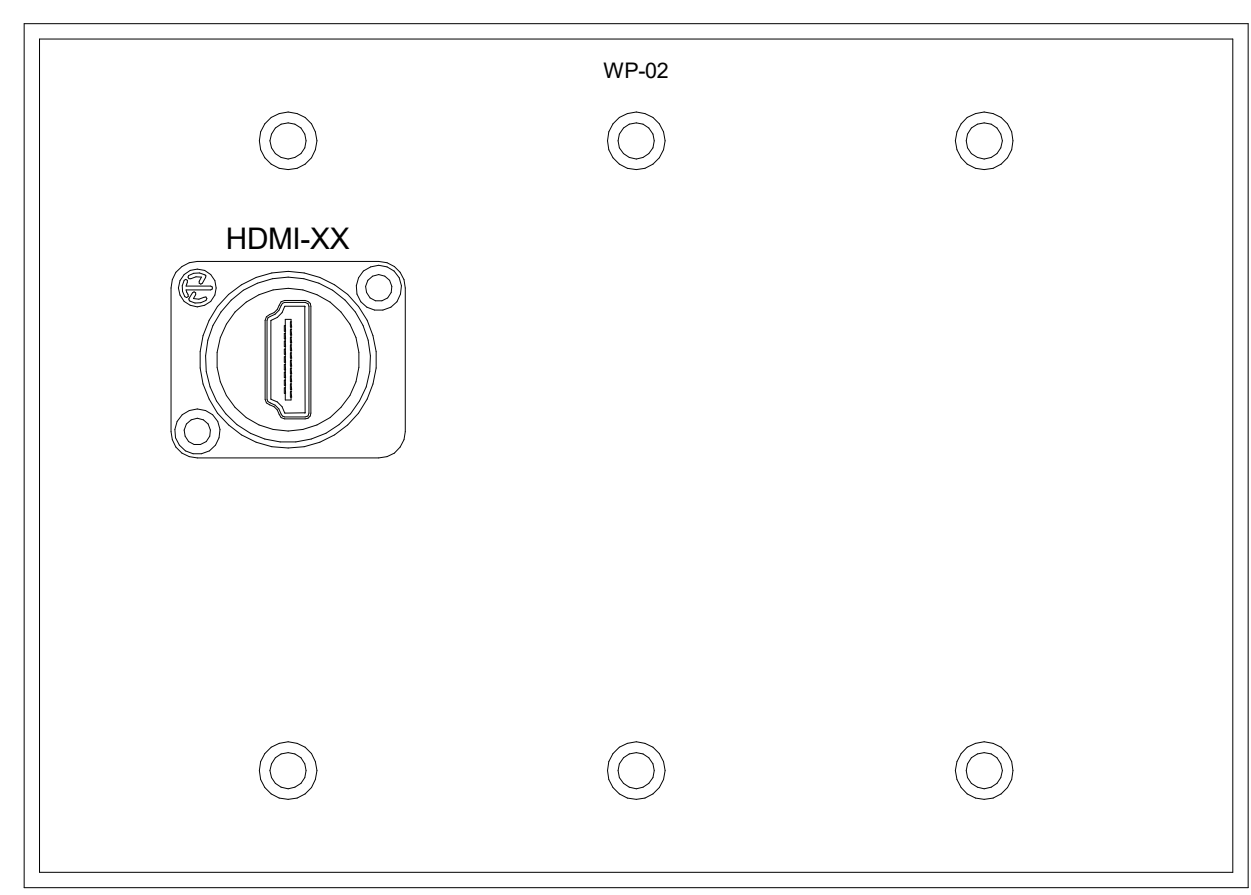
AV800



1 AV DETAILS - RACK ELEVATION
NO SCALE



2 AV WALL PANEL - WP-01
12" = 1'-0"



3 AV WALL PANEL - WP-02
12" = 1'-0"



Project

Consultant



Revisions

No. Description Date

Stamp

Issuance

FOR BIDDING

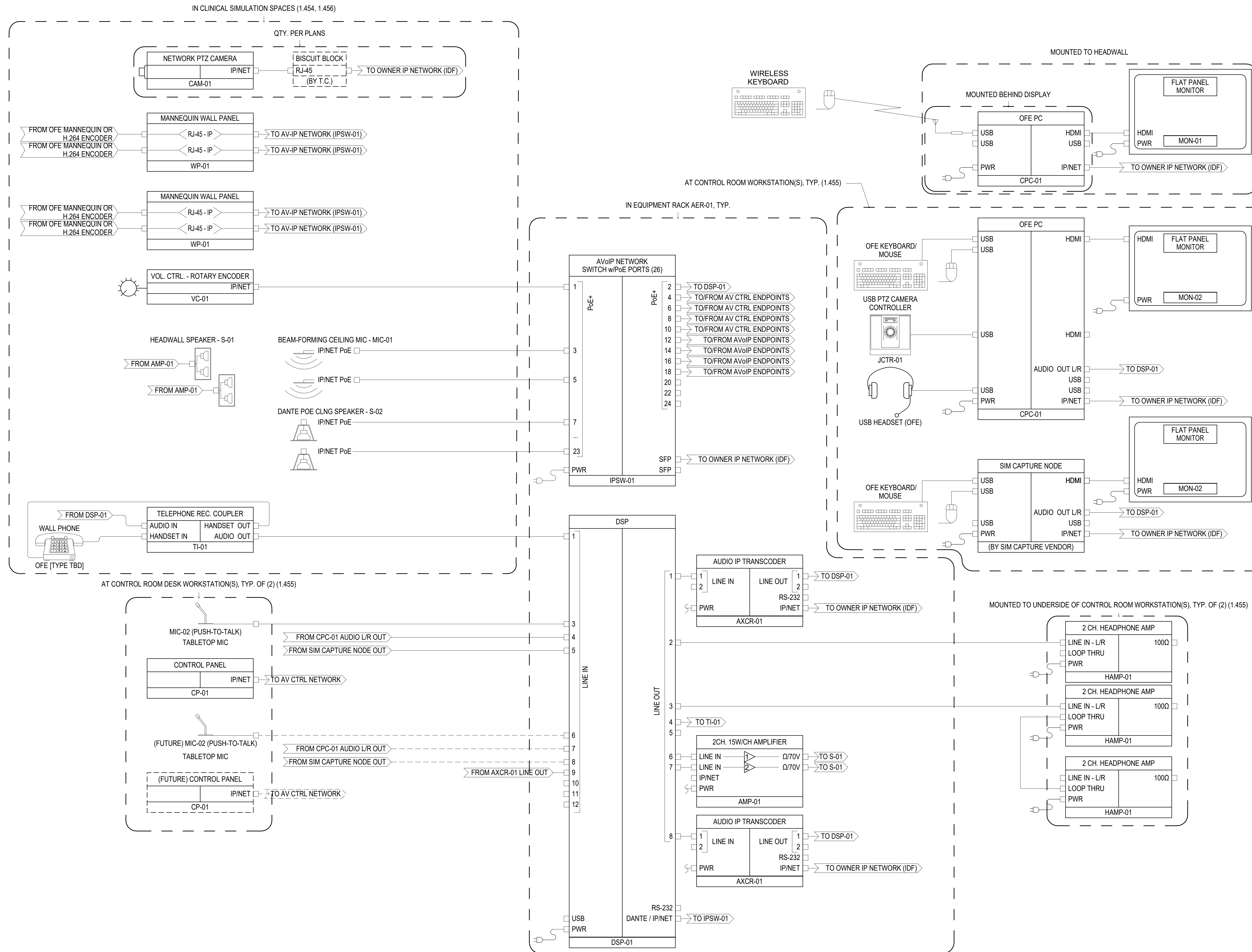
Date
06/03/2024

Project Number
22093
EDA Award Number 07-79-07767
URI 116720

Drawing Title
AV SCHEMATICS - SIM/CTRL SYSTEMS

Sheet No

AV900



1 AV SCHEMATIC DIAGRAM - SIM/CTRL SYSTEMS (DIAGRAM DEPICTS ONE TWO-BED SIM ROOM AND ONE RESPECTIVE SIDE OF THE CONTROL ROOM)
12" = 1'-0"

DATE: 6/3/2024 12:50:28 PM
FILE PATH: C:\ABD\ABD\ABD - Documents\Projects\SDRA - Columbia Gorge CC Nursing SIM Lab - AV\05_ABD Revit_22\CCGCC_AV_22.rvt
copyright © 2018



Project

Consultant



Revisions

No.	Description	Date

Stamp

Issuance

**FOR
BIDDING**

Date
06/03/2024

Project Number

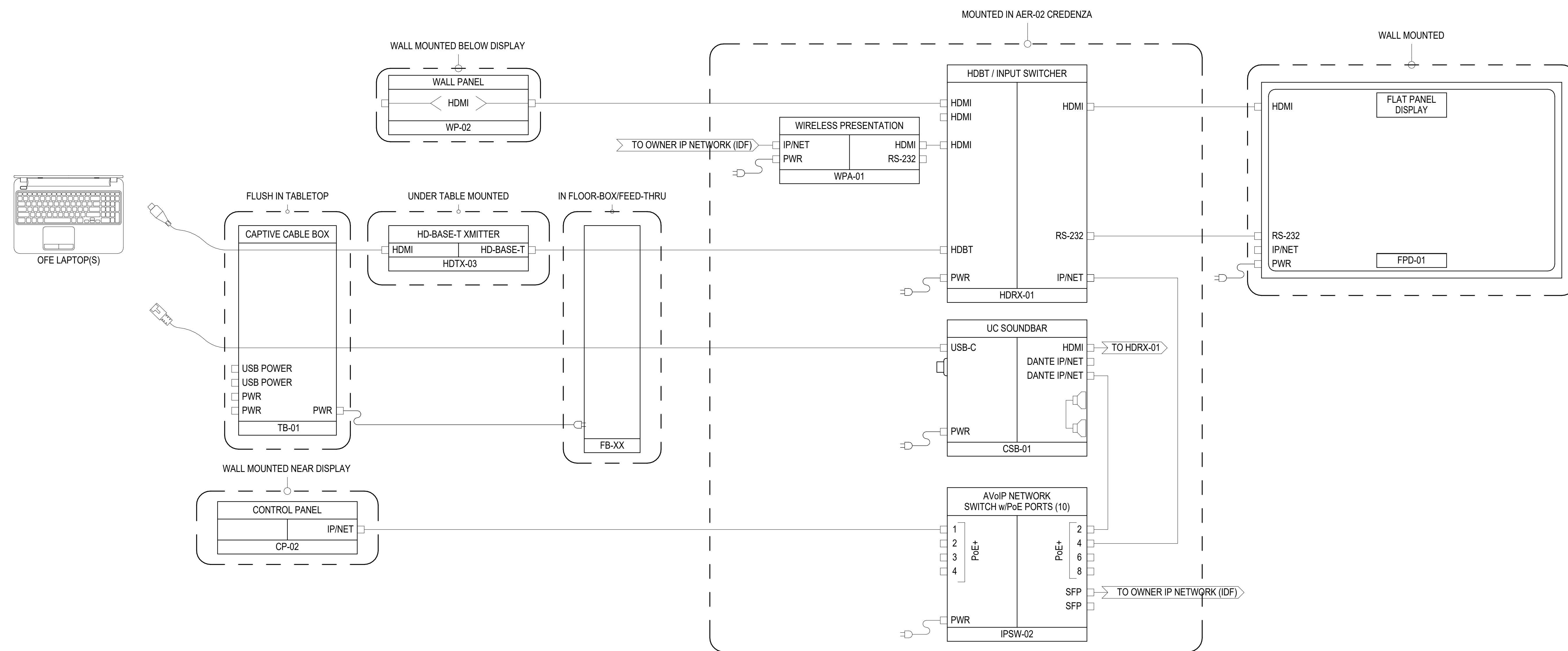
22093
EDA Award Number 07-79-07767
URI 116720

Drawing Title

**AV SCHEMATICS -
DEBRIEF SYSTEMS**

Sheet No

AV901



1 AV SCHEMATIC DIAGRAM -DEBRIEF SYSTEMS
12" = 1'-0"