

Tuition & Fees



CGCC \$4,250



UO/OSU \$10,800



Private Oregon Colleges \$53,900*

Degrees & Certificates Awarded

Transfer Degrees



Applied Science Degrees



Certificates



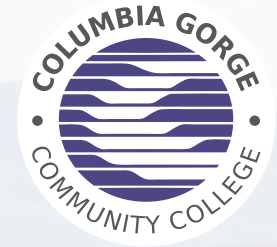
Financial Aid Awarded

Total Aid Awarded:	\$3,543,164
Pell Grants:	\$1,794,450
Other State and Federal Grants:	\$273,442
Loans:	\$1,269,016
Scholarships and Institutional Grants:	\$206,256



Facts at a Glance

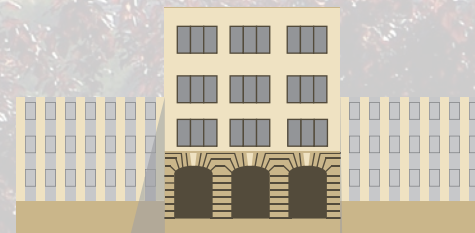
a guide to Columbia Gorge Community College



Columbia Gorge Community College was established in 1977, and originally offered credit and community education courses through Portland Community College. Over its 40-year history, the college has expanded to serve both Hood River and Wasco counties as its official district, as well as offering educational resources to students from the entire Mid-Columbia region. Since obtaining independent accreditation in 2013, CGCC has sought to establish itself as the first option of educational choice for students in its area, to expand course offerings, and to tailor its programs and services to meet the growing and changing needs of the region.

The college offers six Associate degrees, seven Associate of Applied Science degrees, and 14 certificates. The college is the only institution of higher education in the region, offering a gateway to four-year degrees through partner universities across Oregon.

The college's main campus in The Dalles, Ore., (pop. 13,620) occupies 62 acres overlooking the Columbia River. The 13.5 acre Hood River campus is 30 minutes west. The Columbia River Gorge and Cascade Mountain include a diverse and scenic mix of dramatic waterfalls, whitewater rivers, forests and wilderness, four-season recreation, and cultural history.

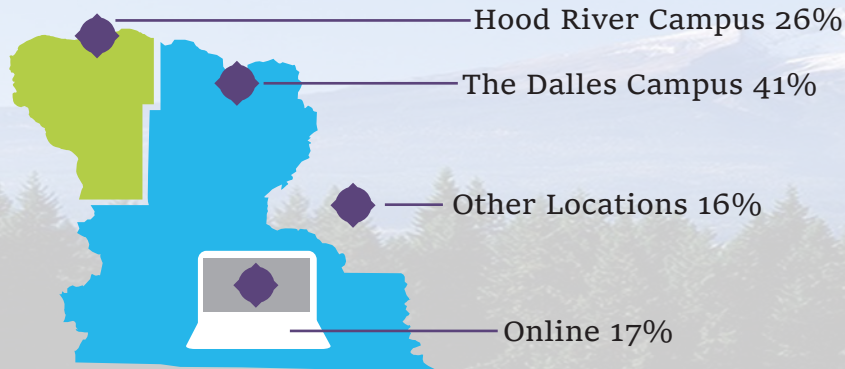


Columbia Gorge Community College
400 East Scenic Drive
The Dalles, OR 97058
www.cgcc.edu

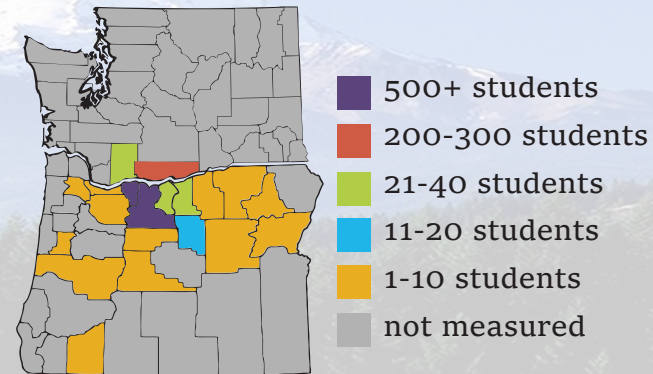
For more information, email Student Services studentservices@cgcc.edu or call (541) 506-6011

* An average of tuition & fees costs for two Oregon private colleges (Reed and Lewis & Clark)

Enrollment by Location



Enrollment by Residency



Race and Ethnicity

When asked about race, most of CGCC students self-identified as “Caucasian/white” (78%)



18% of students declined to self-identify

Native American 2%

Asian, Black/African American < 1%

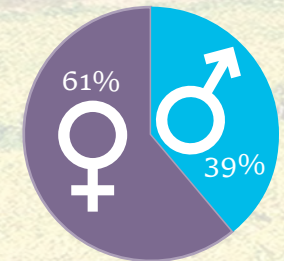
Hawaiian/Pacific Islander < 1%

When asked about ethnicity, 27% of CGCC students self-identified as Hispanic or Latinx



Age and Gender

CGCC’s percentage of female students is slightly higher than the national average (55% of all post-secondary enrollees in 2016 were female nationwide).



Following trends seen in community colleges across the nation, more than half of CGCC’s students are of “traditional college age” (18-22), but the college serves students of all ages.

17 & under	18-22	23-29	30-39	40-49	50 & over
< 5%	53%	20%	13%	6%	< 4%

