

**COLUMBIA GORGE
COMMUNITY COLLEGE**



**STUDENT PROFILE
2010-2011**

**Compiled by Karen Carter
Chief Student Services Officer**

**Columbia Gorge Community College
400 East Scenic Drive
The Dalles, Oregon 97058
(541) 506-6010
www.cgcc.cc.or.us**

It is the policy of *Columbia Gorge Community College* and its Board of Education that there will be no discrimination or harassment on the grounds of race, color, sex, marital status, national origin, religion, age, disability, veteran status, sexual orientation, and any other status protected by applicable local, state, or federal law in any educational programs, activities, or employment.

Persons having questions about equal opportunity and nondiscrimination should contact:
Chief Talent and Strategy Officer - Employment
Chief Academic Officer - Educational Program
Chief Student Services Officer - Student Programs, Activities, and Services

2010 - 2011 STUDENT PROFILE TABLE OF CONTENTS

Student Profile Summary	2
Total FTE	4
Total FTE Compared to 3% Projected Growth.....	5
Reimbursable FTE.....	6
FTE by Category	7
% FTE by Category.....	8
FTE by Location	9
Unduplicated Head Count.....	10
Age Distribution.....	11
Average Age.....	12
Residency	13
Ethnicity	14
Gender Distribution	15
Financial Aid Awards.....	16
History of Financial Aid Awards	17
Degrees & Certificates Awarded.....	18

STUDENT PROFILE SUMMARY

2010 - 2011

ENROLLMENT

- Total FTE decreased slightly over the previous year (which was at an all time high) to 1262.40.
- This FTE keeps CGCC ahead of its target of 3% annual growth since moving to the current campus.
- Unduplicated total headcount increased 3.2% to 5063 students. The headcount for credit students decreased 4.9% from 2186 to 2079.
- FTE for classes taught in Wasco County increased 1.3% over last year. FTE for classes taught in Hood River County decreased 9.2%. FTE for online classes increased 9.4%.
- Reimbursable FTE decreased 1.5% over last year.
- FTE was generated in the following manner:
 - 49.9%: Lower Division Collegiate (transfer) courses
 - 26.2%: Professional/Technical courses. (see notes on next page)
 - 21.5%: Pre-College courses. (see notes on next page)
 - 1.2%: Adult Continuing Education courses
 - 1.2%: Non-reimbursable courses

CREDIT STUDENTS

- Full-time: 777 students were registered in a minimum of 12 credit hours for at least one quarter during the academic year, which is a decrease (2.6%) over the previous year. The average number of credits taken by full-time students was 13.3, a small decrease over last year.
- Part-time: 1302 students were registered as part-time students (enrolled in one to eleven credits at least one term) which is a decrease of 6.2%. The average number of credits taken by part-time students was 6.1, the same as last year.

AGE

- The average age of all students was 35.7, down from 36.8 last year.
- The average age of full-time students was 27.2, down from 28.3 last year.
- Students from 10 years old to 91 years old took classes.

RESIDENCY

- 40.8% of all students were from Wasco County (down from the 42.4% last year).
- 31.3% of all students were from Hood River County (about the same as last year).
- 18.5% of all students were from Washington (up from 17.8% last year).
- 9.3% of all students were from Oregon, outside Wasco and Hood River counties (up from the 8.6% last year.)

ETHNIC BACKGROUND

- The student body was slightly less diverse ethnically than in the previous year. 80.0% of all students served were Caucasian (compared to 78.2% the previous year).
- The credit student population was slightly more diverse ethnically than last year. 78.6% of all credit students served were Caucasian (compared to 79.5% the previous year). The largest growth occurred in the Hispanic segment.

GENDER

- 59.8% of all students were female (up from 58.4% last year).
- 62.3% of credit students were female (an increase from the 61.9% last year).

FINANCIAL AID

- A total of \$6,370,750 was awarded to *CGCC* students in a combination of federal financial aid and *CGCC* Foundation scholarships. This is an increase of 12.9% over last year.
- For Fall term 2010, 69.5% of the full-time students received financial aid, 60.3% of students enrolled in 6-11 credits received financial aid, and 19.9% of students enrolled in 5 credits or less received financial aid. This is an increase in every group.

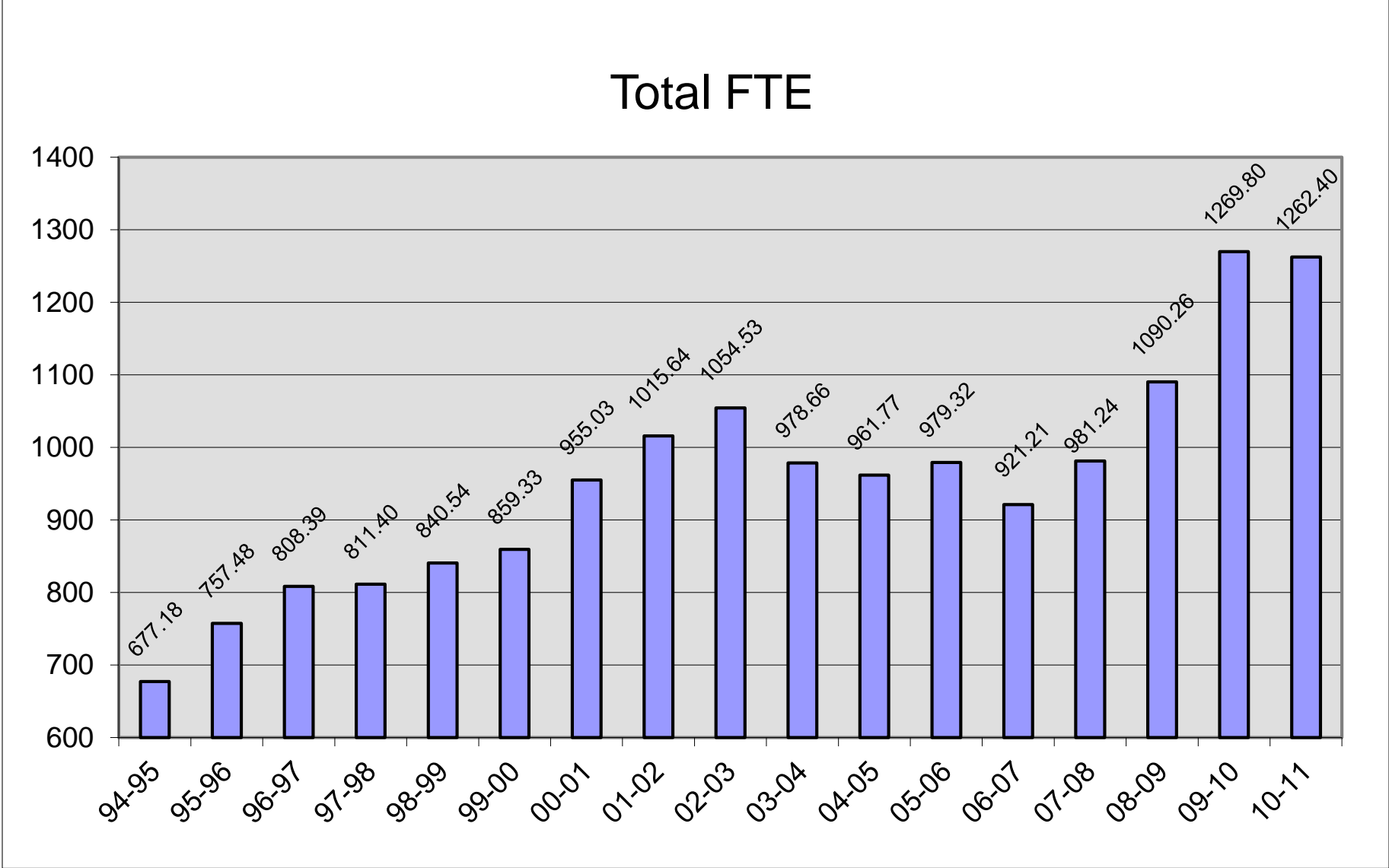
GRADUATES

- There was a decrease in the total number of graduates. The number of degrees awarded increased with the number of certificates and high school awards decreasing. The largest drop was in the number of GED's completed.

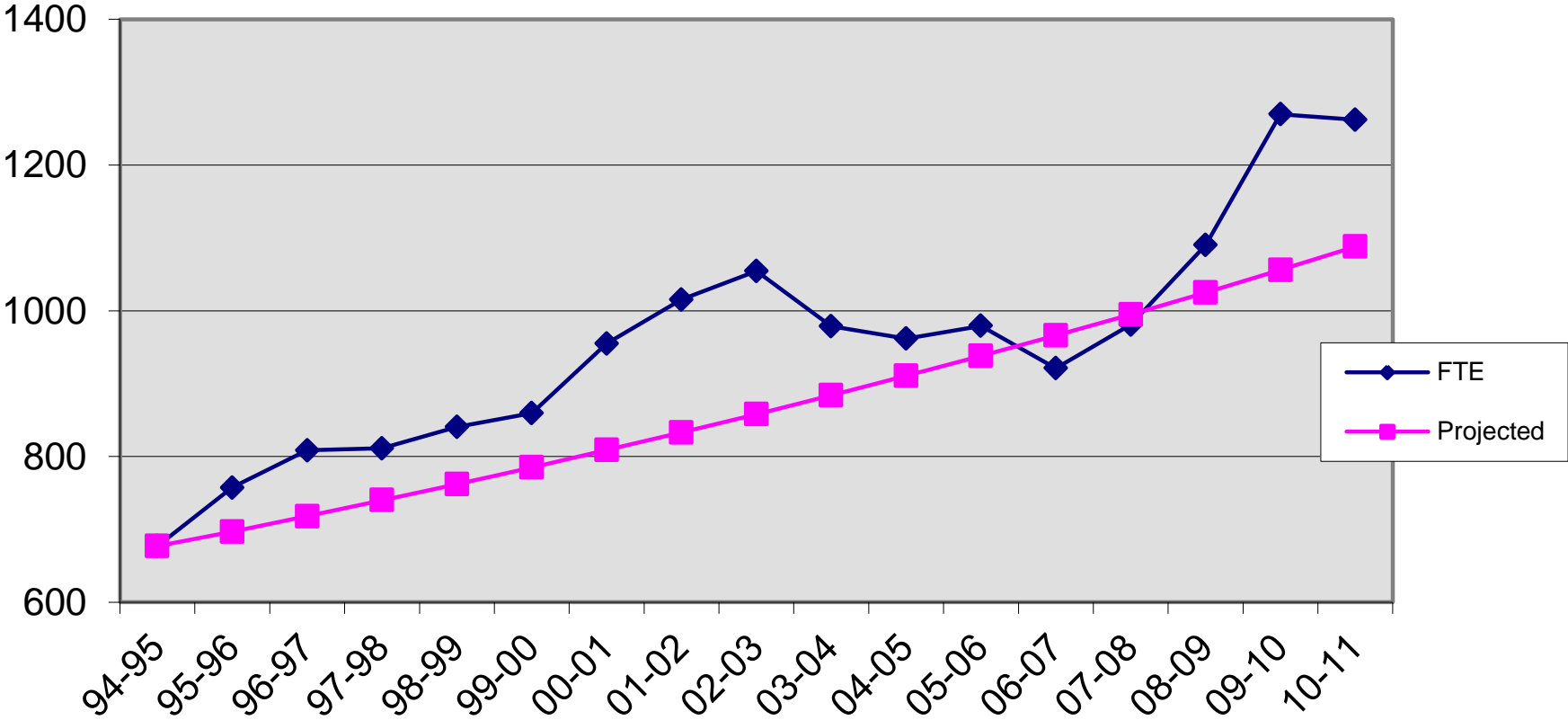
MILESTONES THAT HAVE/MAY IMPACT FTE

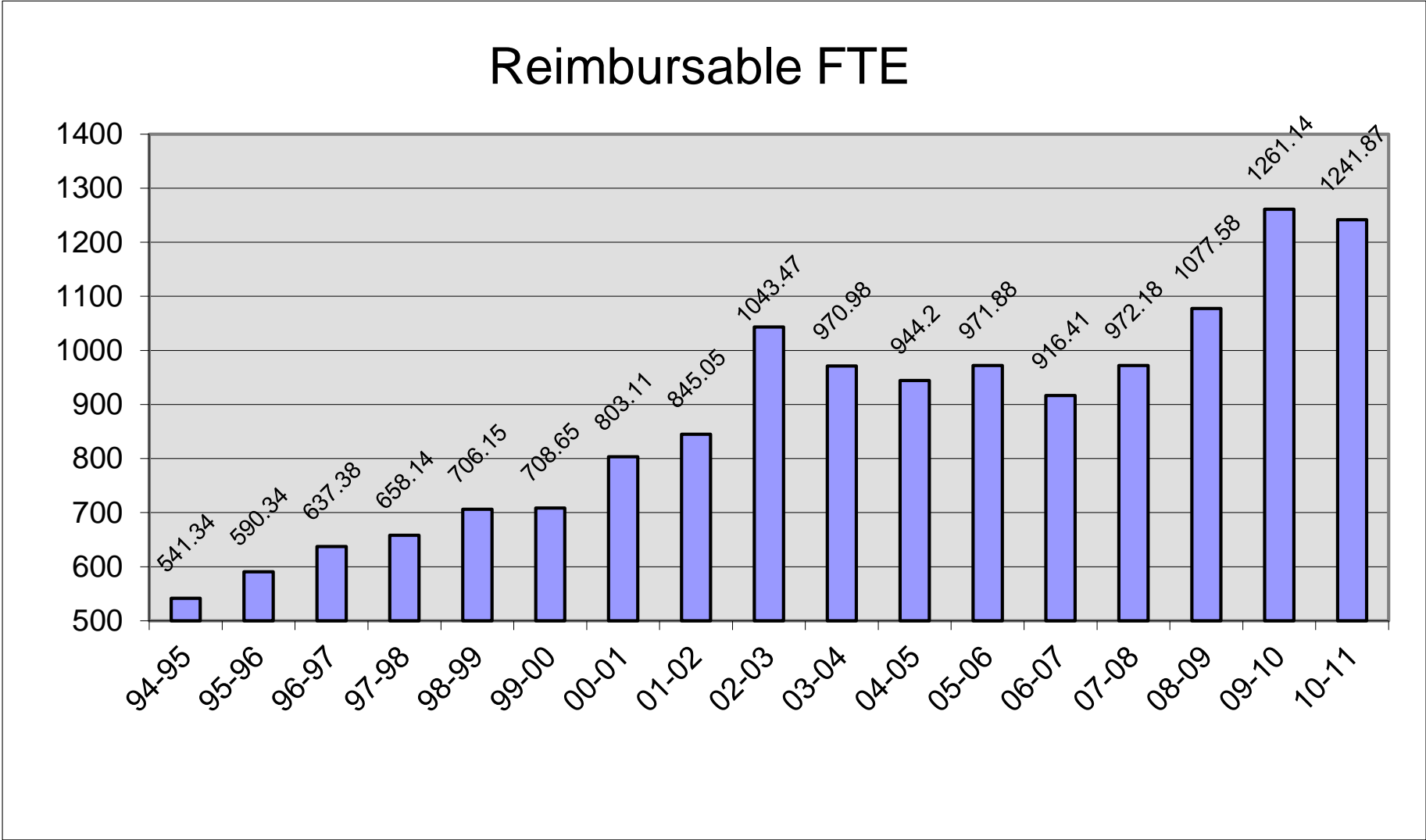
- Fall 1994: *CGCC* moved to new campus in The Dalles
- 2000-2001: Northwest Aluminum closure resulted in influx of dislocated workers who had two years of educational benefits for retraining
- Fall 2001: 1st cohort of student admitted to the Nursing program with increased enrollment in pre-requisite courses for this program
- Summer 2003: Classes eligible for reimbursement under Adult Continuing Education reduced by the Office of Community Colleges and Workforce Development
- 2005-06: Final year the Electronics Engineering Technology program was offered
- Fall 2007: 1st credit cohorts admitted to the Renewal Energy Technology program with influx of students completing pre-requisites for this program
- Fall 2007: 1st cohort of students admitted to the Medical Assisting program
- Fall 2008: Opening of Hood River Indian Creek Campus
- Spring 2009: Addition of 2nd cohort of students for the Renewal Energy Technology program
- 2010-11: To ensure state consistency in data reported between colleges, Math classes with numbers less than 100 that had previously been labeled as Professional/Technical Prep, were changed to be reported as Pre-College.

Total FTE

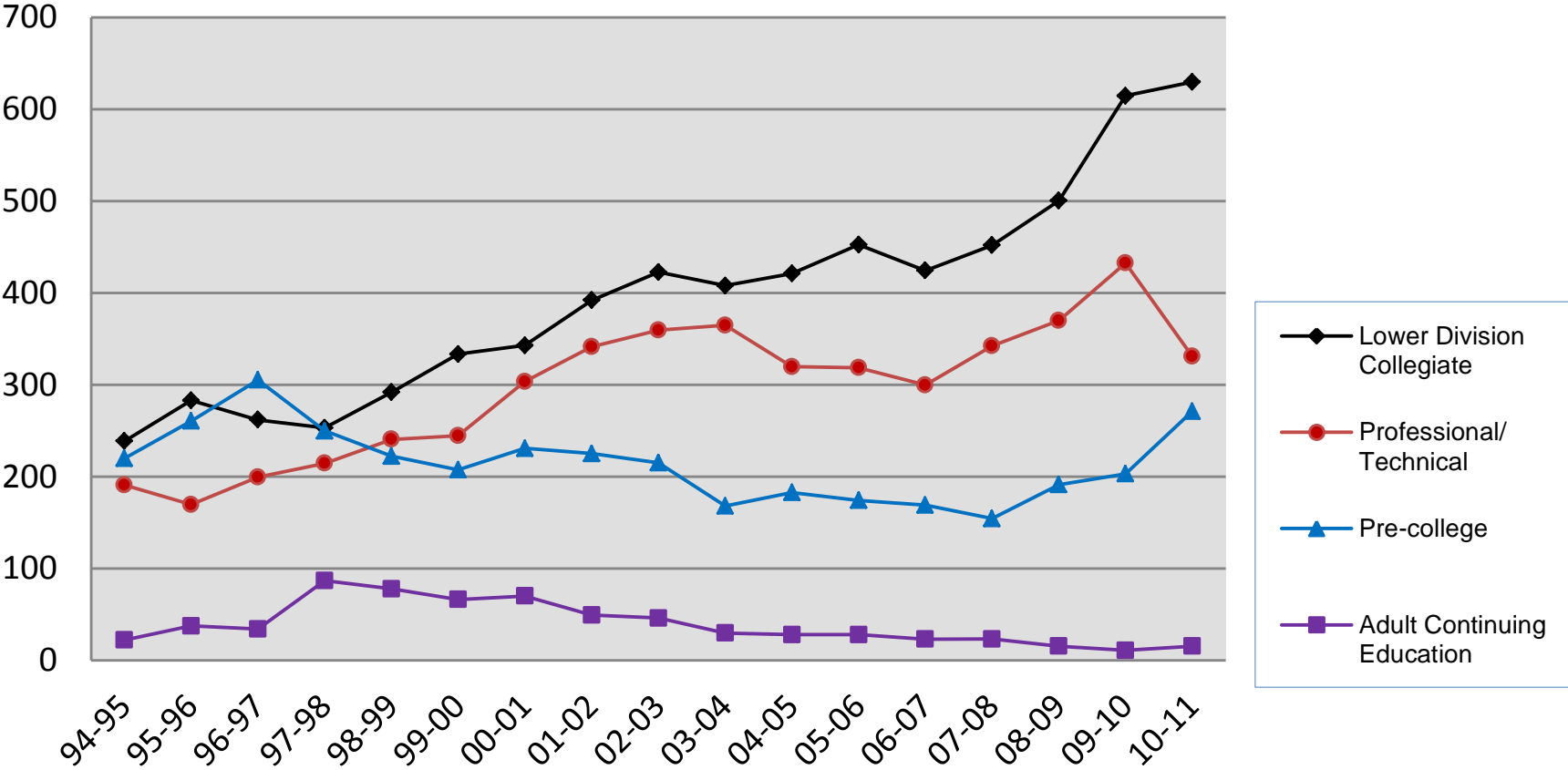


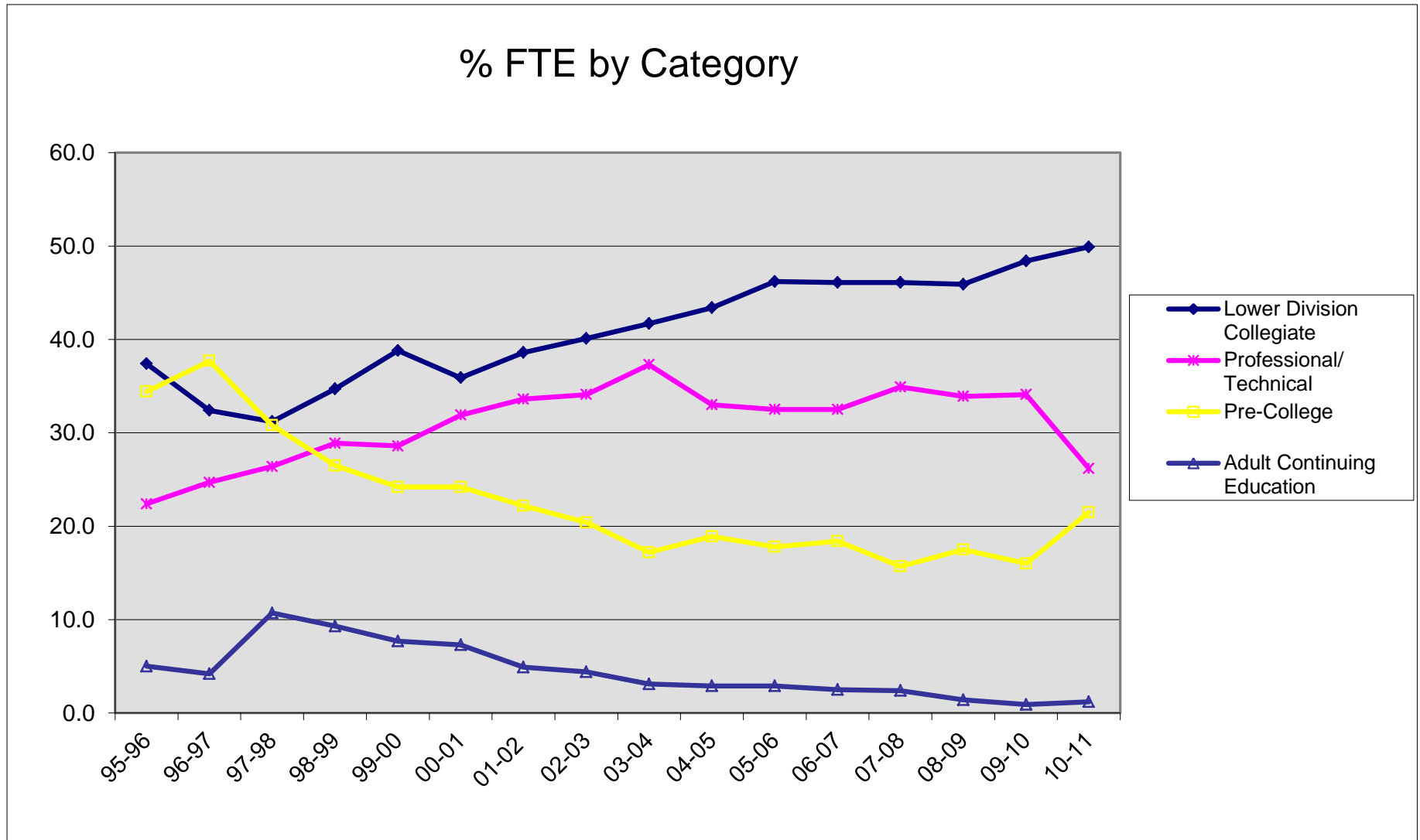
Total FTE Compared To 3% Projected Growth



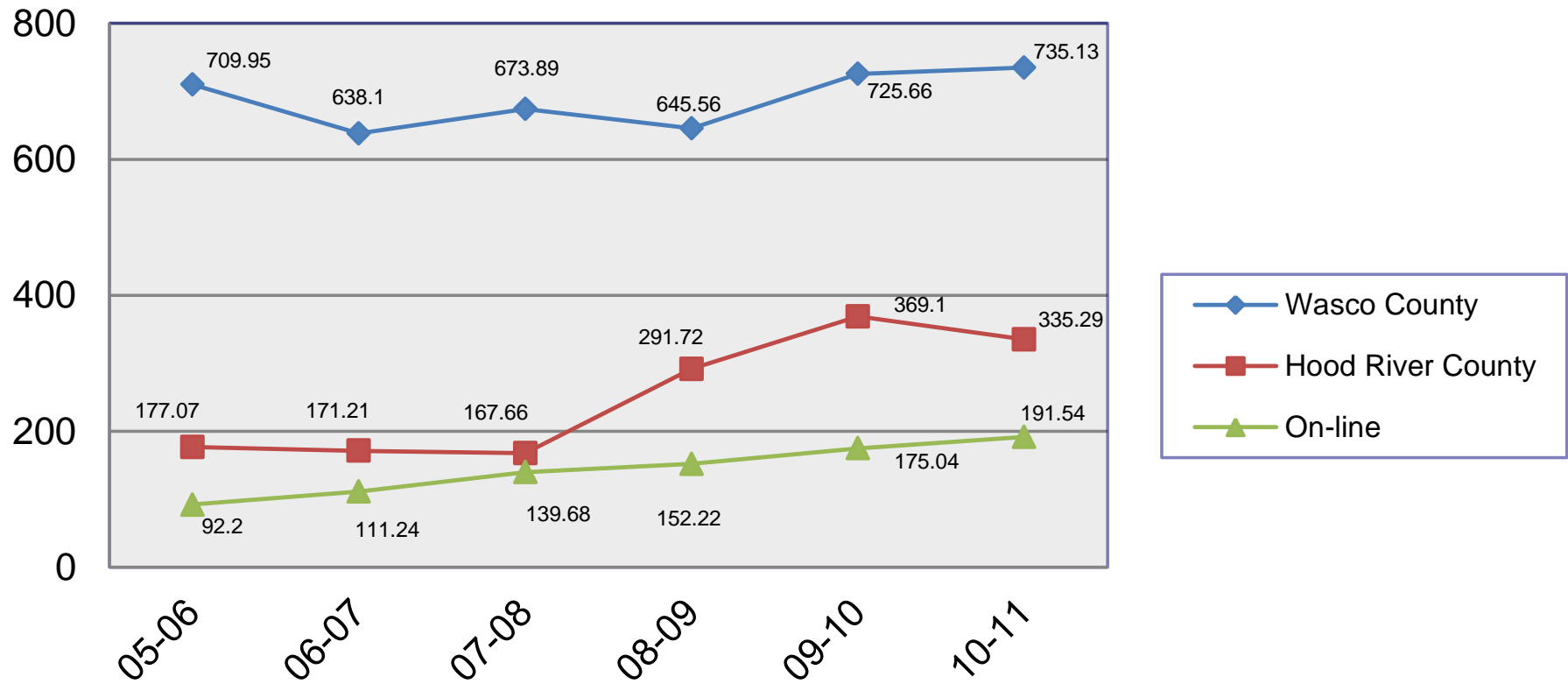


FTE by Category

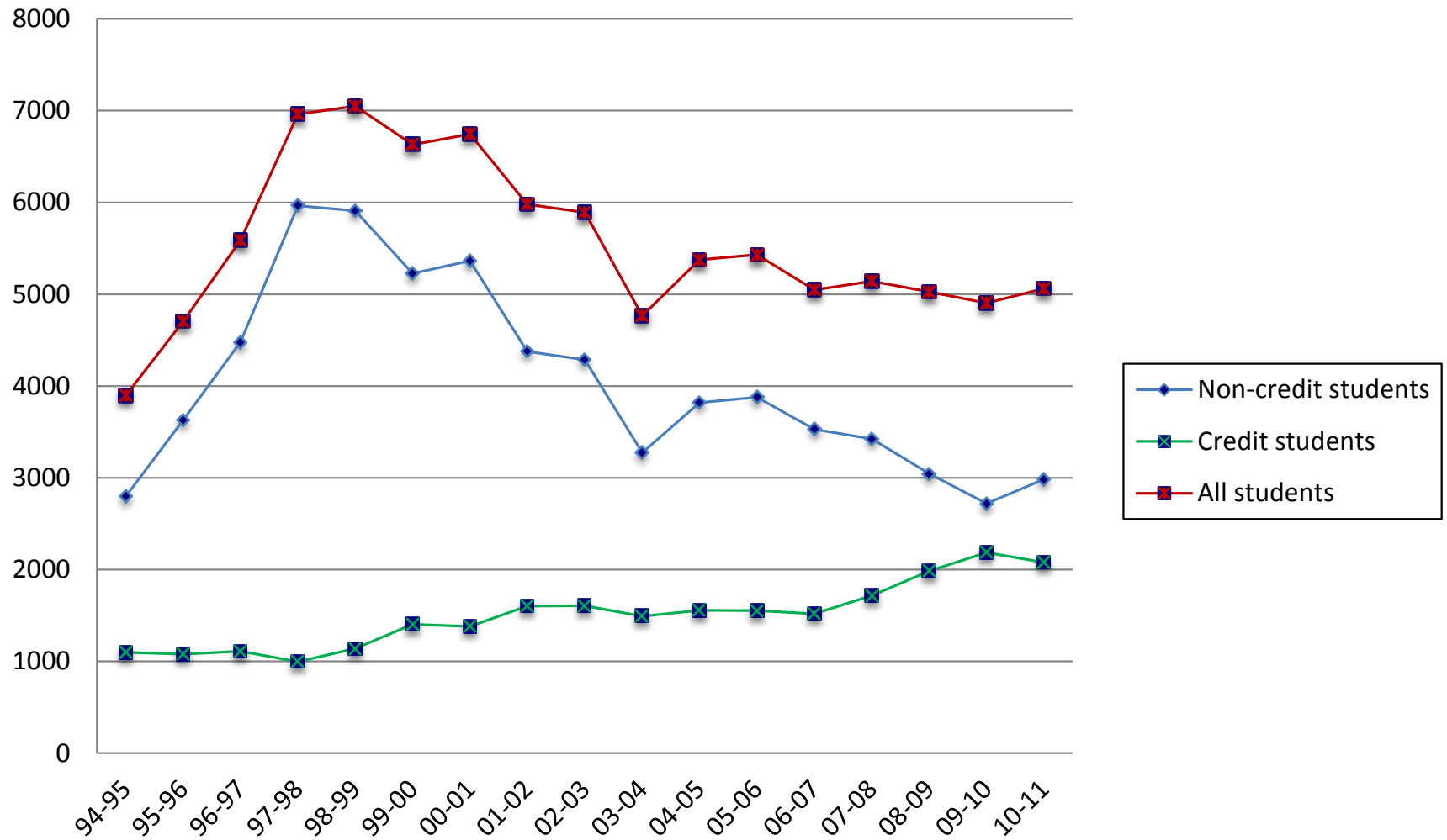




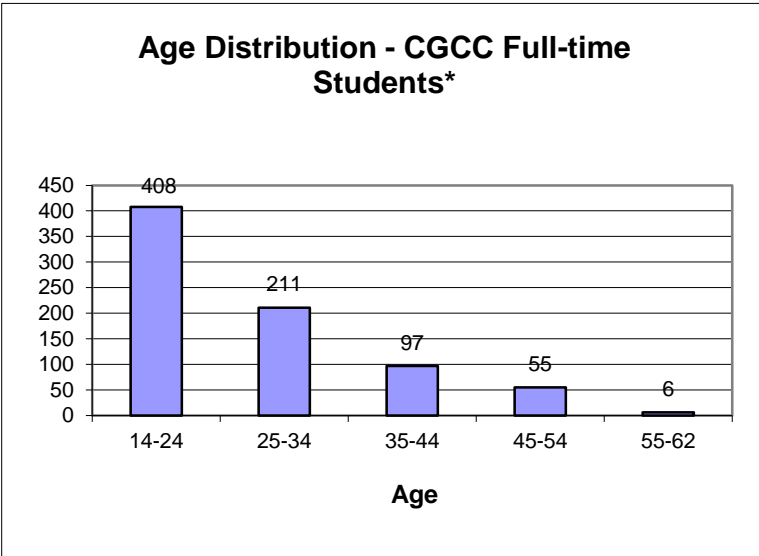
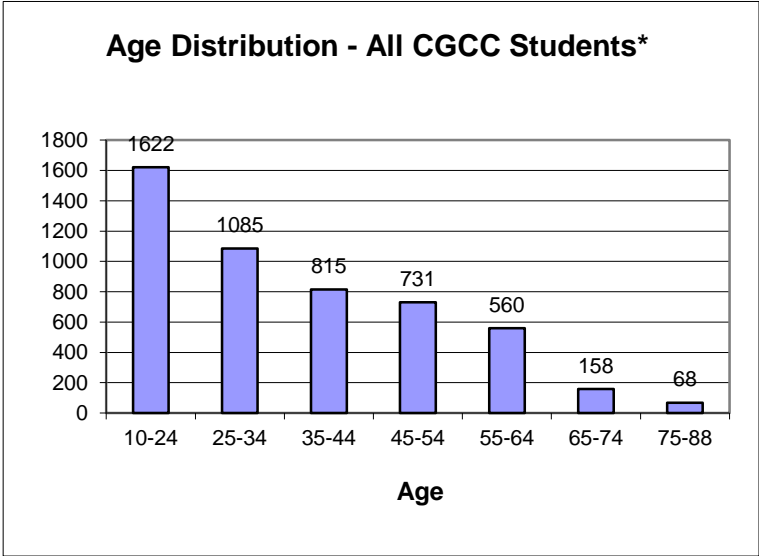
FTE by Location



Unduplicated Head Count

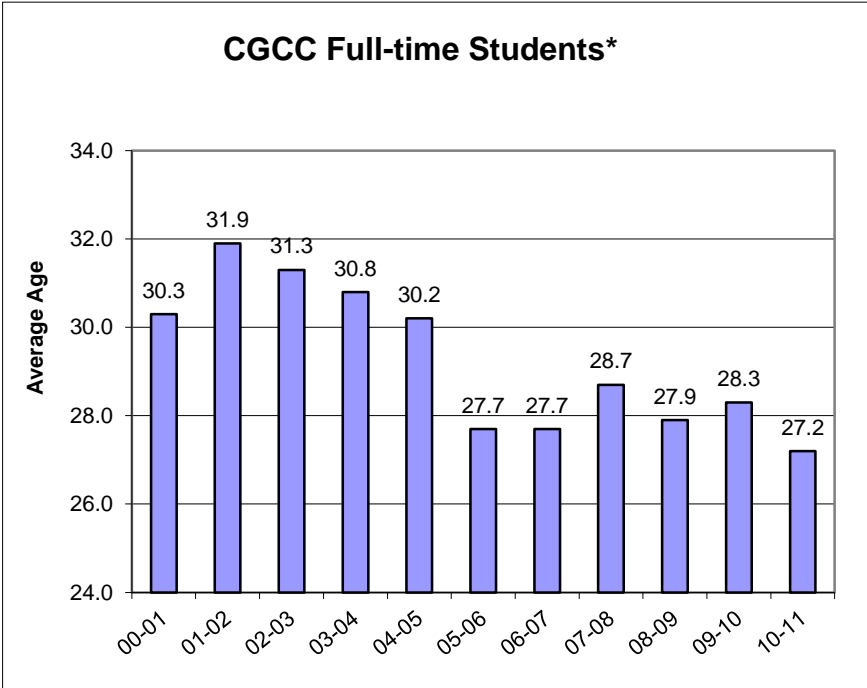
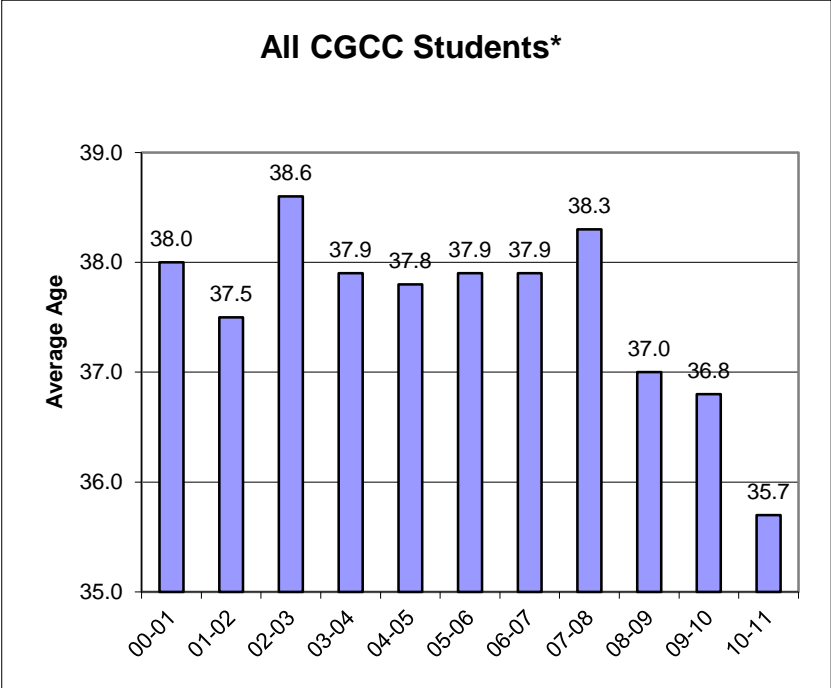


Age Distribution



*who reported age

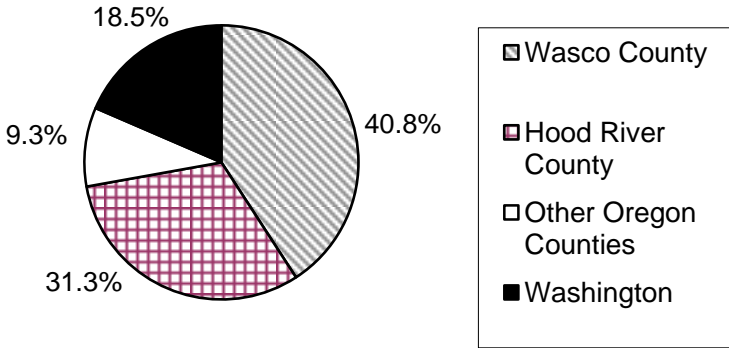
Average Age



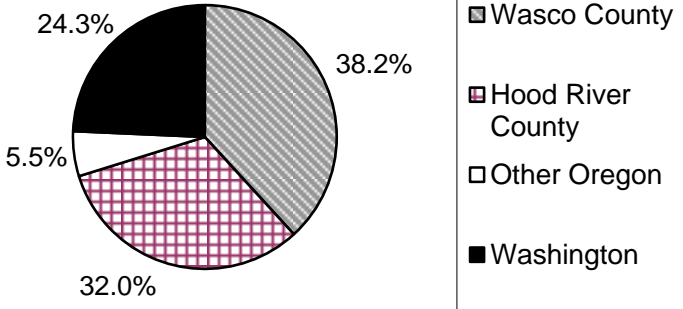
*who reported age

Residency

**Residency
All CGCC Students**

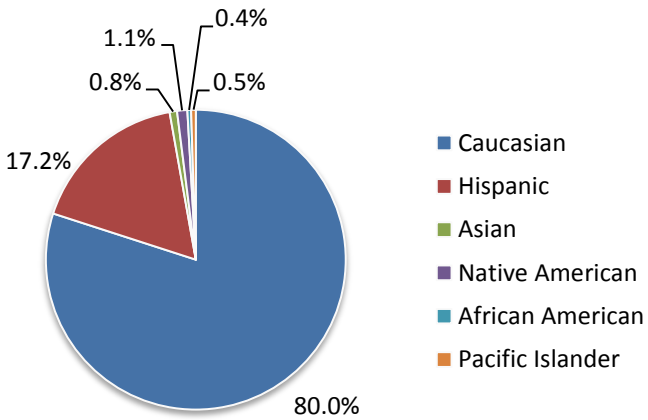


**Residency
Credit Students**

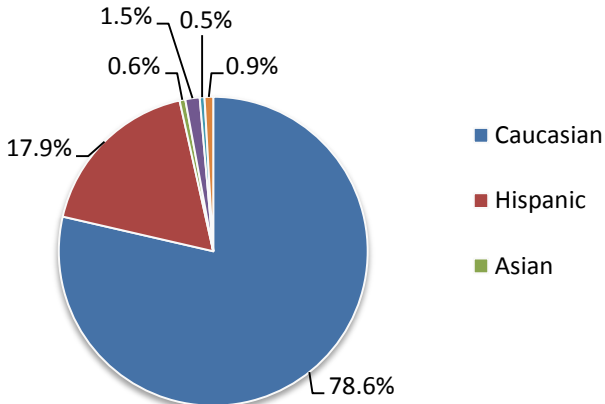


Ethnicity *

All CGCC Students



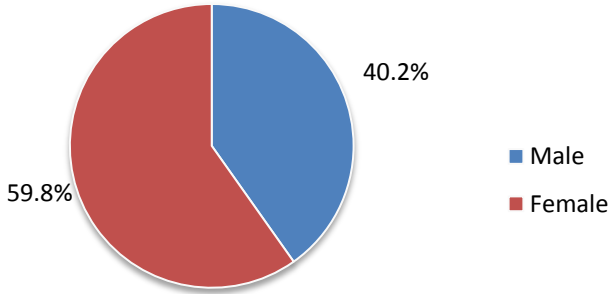
CGCC Credit Students



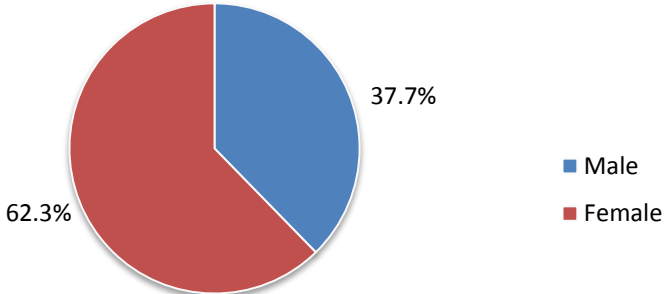
*of those who reported ethnicity

Gender Distribution

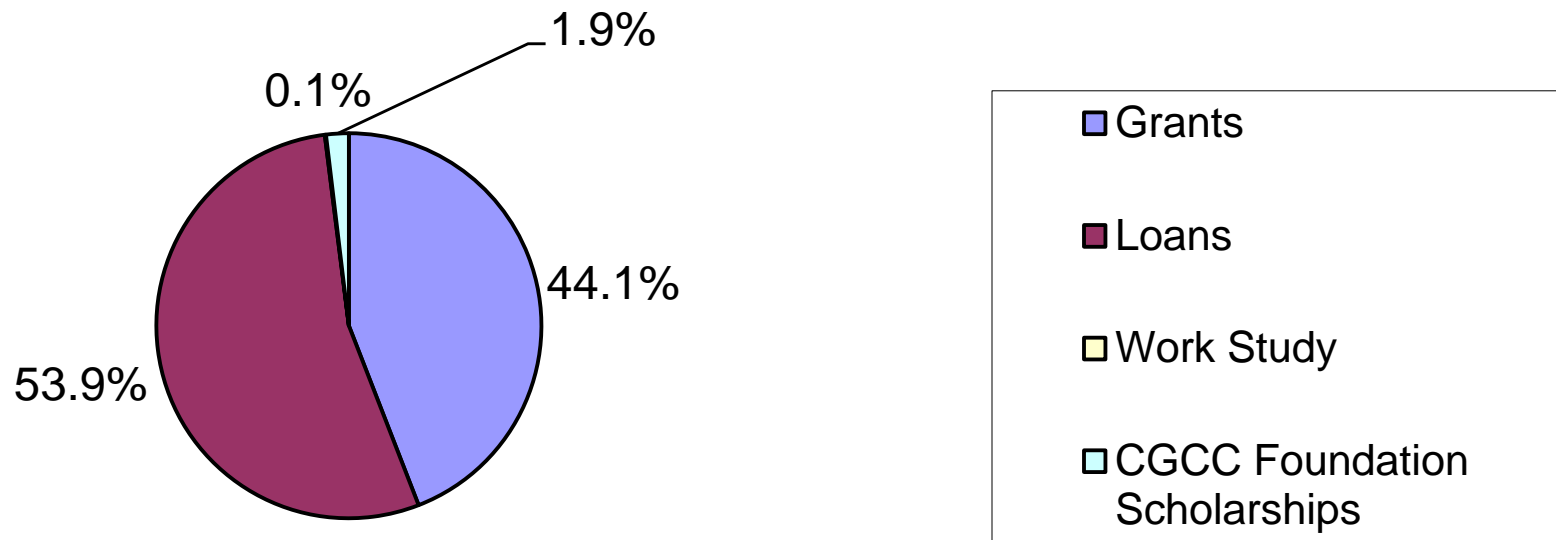
All Students



Credit Students

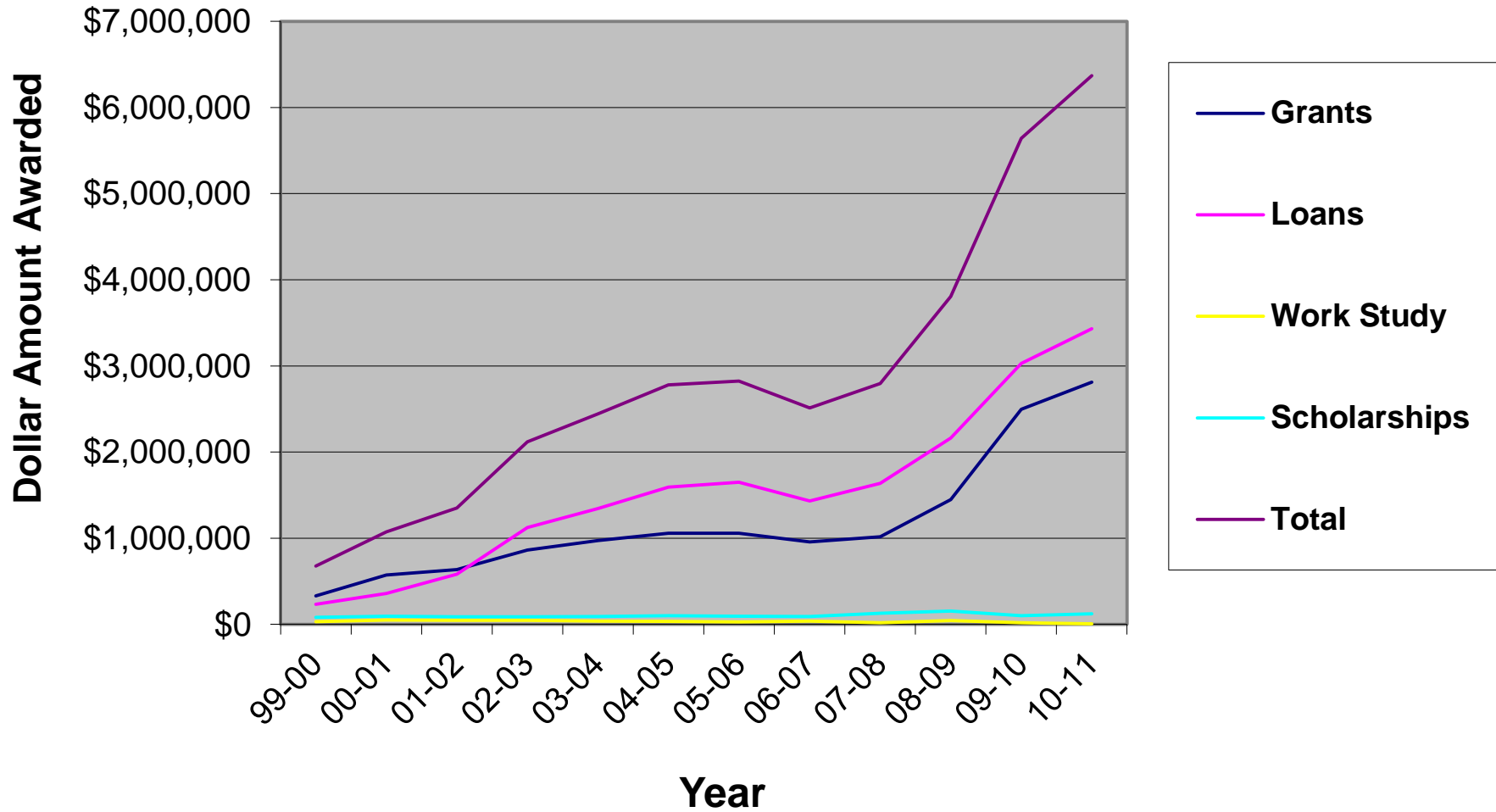


Financial Aid Awards



Total Awarded: \$6,370,750

History of Financial Aid Awards



Degrees & Certificates Awarded

