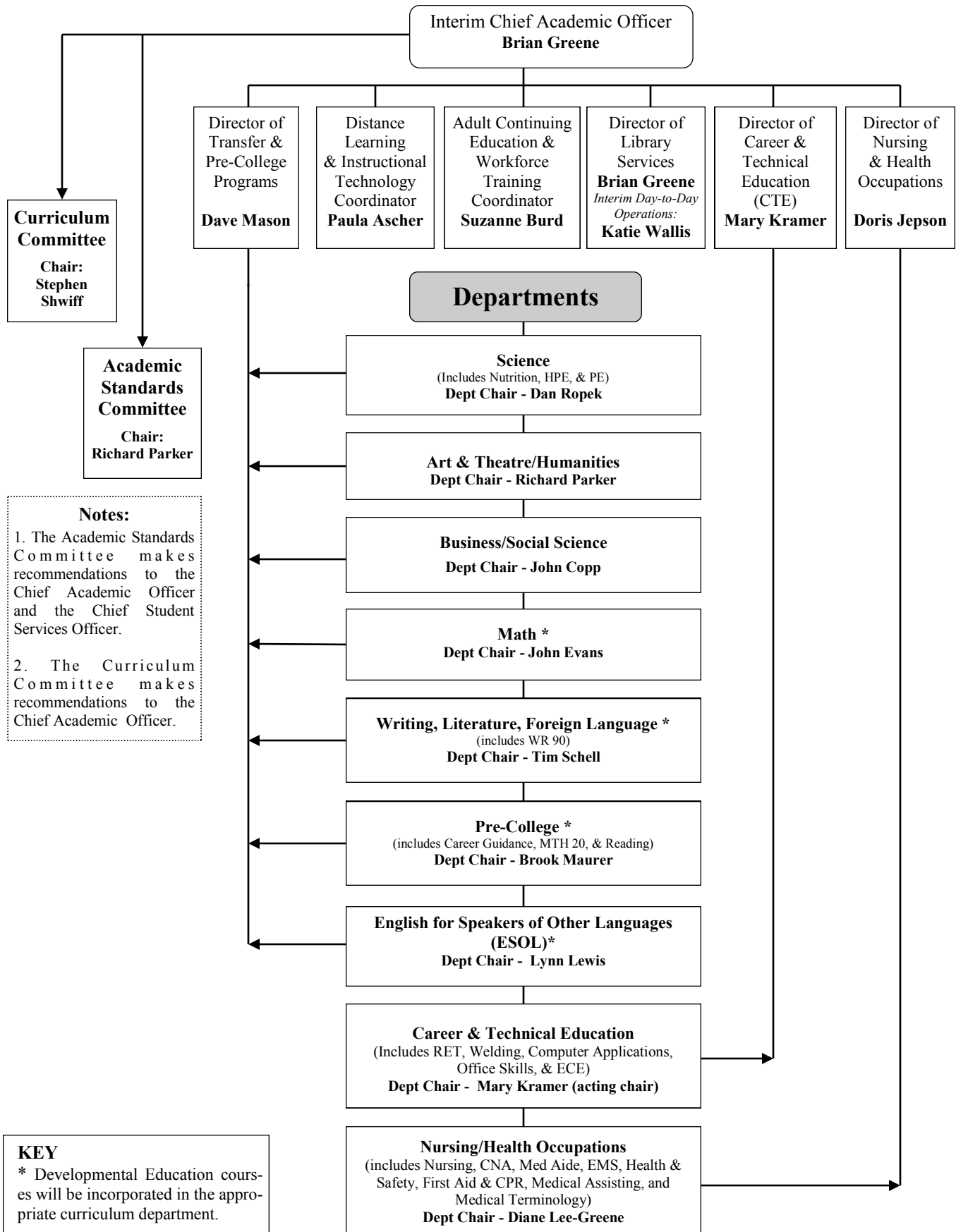


Revised Instructional Governance Model

2012-2013 Academic Year

Revised 6-20-12



Notes:

1. The Academic Standards Committee makes recommendations to the Chief Academic Officer and the Chief Student Services Officer.
2. The Curriculum Committee makes recommendations to the Chief Academic Officer.

KEY

* Developmental Education courses will be incorporated in the appropriate curriculum department.